

Detailed Analysis Unif. of Temp. (Sample Report)

Customer, Location: Unit, Number

Author

Name	Company	Date	Signature
Author Name	ELPRO	24.Apr.2014	

Review

Name	Company	Date	Signature

Approval

Name	Company	Date	Signature

Content

1. General	3
2. Thresholds	3
3. Conclusion	3
3.1 Average/Minimum/Maximum Temperature	3
3.2 Overall Temperature	3
3.3 Lowest/Highest Temperatures	4
4. Mapping Results	5
4.1 Overview	5
4.2 Mapping Location No: 1	6
4.3 Mapping Location No: 2	7
4.4 Mapping Location No: 3	8
4.5 Mapping Location No: 4	9
4.6 Mapping Location No: 5	10
4.7 Mapping Location No: 6	11
4.8 Mapping Location No: 7	12
4.9 Mapping Location No: 8	13
4.10 Mapping Location No: 9	14
4.11 Mapping Location No: 10	15
4.12 Mapping Location No: 11	16
4.13 Mapping Location No: 12	17
4.14 Mapping Location No: 13	18
4.15 Mapping Location No: 14	19
4.16 Mapping Location No: 15	20
4.17 Mapping Location No: 16	21
4.18 Mapping Location No: 17	22
4.19 Mapping Location No: 18	23
4.20 Mapping Location No: 19	24
4.21 Mapping Location No: 20	25
4.22 Mapping Location No: 21	26
4.23 Mapping Location No: 22	27
5. Used LIBERO PDF Reports	28
6. Device Configuration	29

1. General

Author	Author Name
Creation Date	24.Apr.2014
Application	elproVIEWER - Version 2013.5.1.0
Unique Mapping ID	51324731
Report Time Base	UTC +01:00

Customer	Company, Location
----------	-------------------

2. Thresholds

Limit	Value
Upper Temperature Limit	8.0 °C
Lower Temperature Limit	2.0 °C

3. Conclusion

3.1 Average/Minimum/Maximum Temperature

Measuring Point	Average [°C]	Minimum [°C]	Maximum [°C]
Mapping Location No: 1	4.2	3.4	5.7
Mapping Location No: 2	4.3	3.3	5.4
Mapping Location No: 3	4.2	3.2	5.5
Mapping Location No: 4	4.3	3.3	5.3
Mapping Location No: 5	4.5	3.8	5.5
Mapping Location No: 6	4.4	3.6	5.3
Mapping Location No: 7	4.9	4.2	5.9
Mapping Location No: 8	4.8	4.0	5.6
Mapping Location No: 9	4.0	2.7	5.8
Mapping Location No: 10	4.2	3.2	5.3
Mapping Location No: 11	4.4	3.5	5.6
Mapping Location No: 12	4.3	3.3	5.3
Mapping Location No: 13	4.7	4.0	5.7
Mapping Location No: 14	4.6	3.8	5.3
Mapping Location No: 15	4.2	3.4	5.6
Mapping Location No: 16	4.3	3.3	5.3
Mapping Location No: 17	4.2	3.2	5.6
Mapping Location No: 18	4.2	3.2	5.5
Mapping Location No: 19	4.4	3.8	5.5
Mapping Location No: 20	4.3	3.5	5.2
Mapping Location No: 21	4.9	4.1	5.9
Mapping Location No: 22	4.6	3.9	5.4

3.2 Overall Temperature

	Value [°C]
Overall average of all single average temperature values	4.4

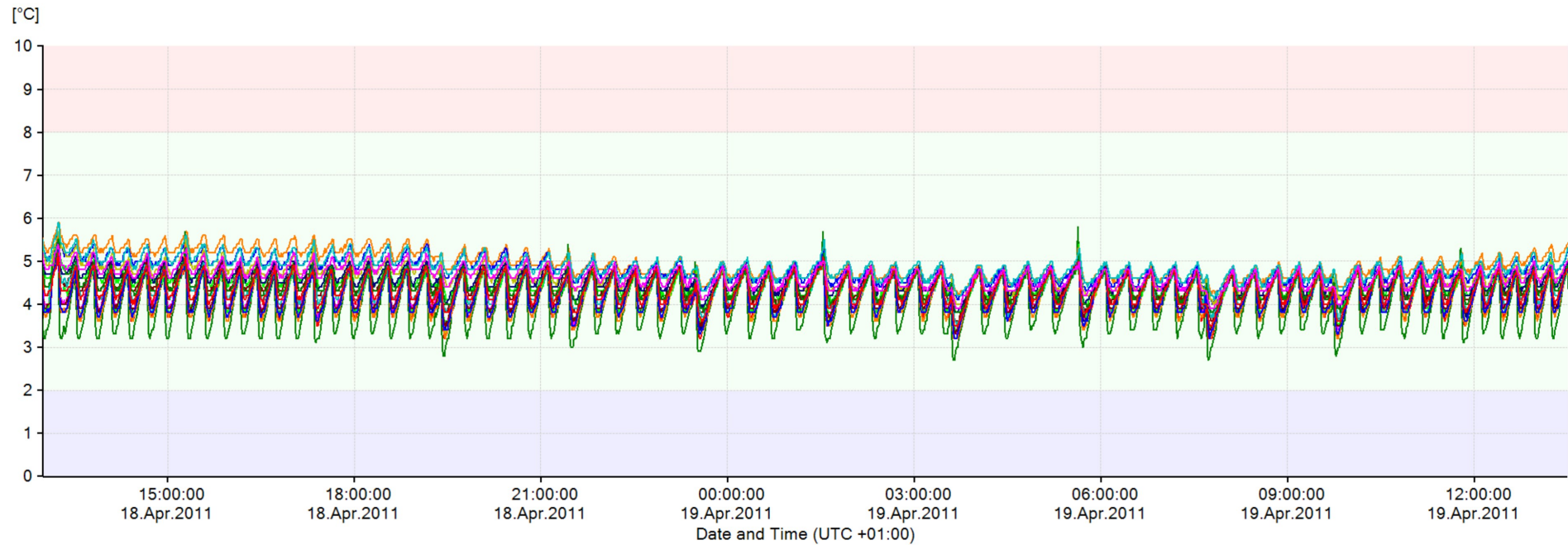
3.3 Lowest/Highest Temperatures

Measuring Point(s) Lowest Value	Value [°C]	Date / Time
Mapping Location No: 9	2.7	19.Apr.2011 03:37:53 (UTC +01:00)

Measuring Point(s) Highest Value	Value [°C]	Date / Time
Mapping Location No: 7	5.9	18.Apr.2011 13:14:37 (UTC +01:00)
Mapping Location No: 21	5.9	18.Apr.2011 13:14:13 (UTC +01:00)

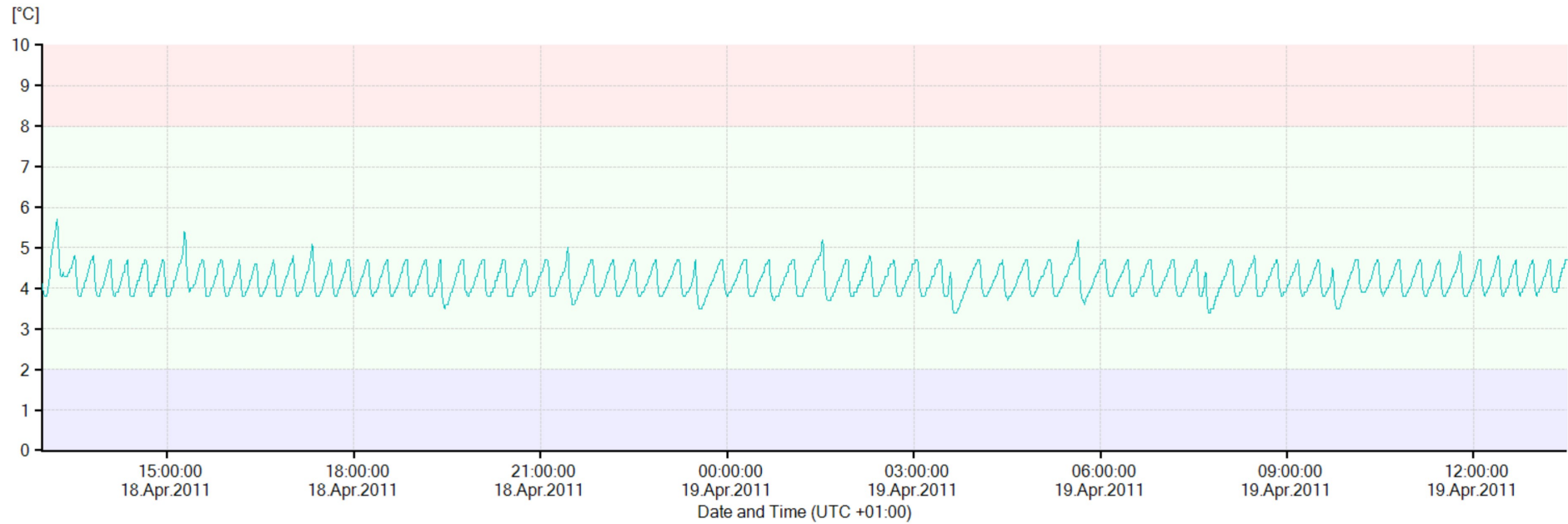
4. Mapping Results

4.1 Overview



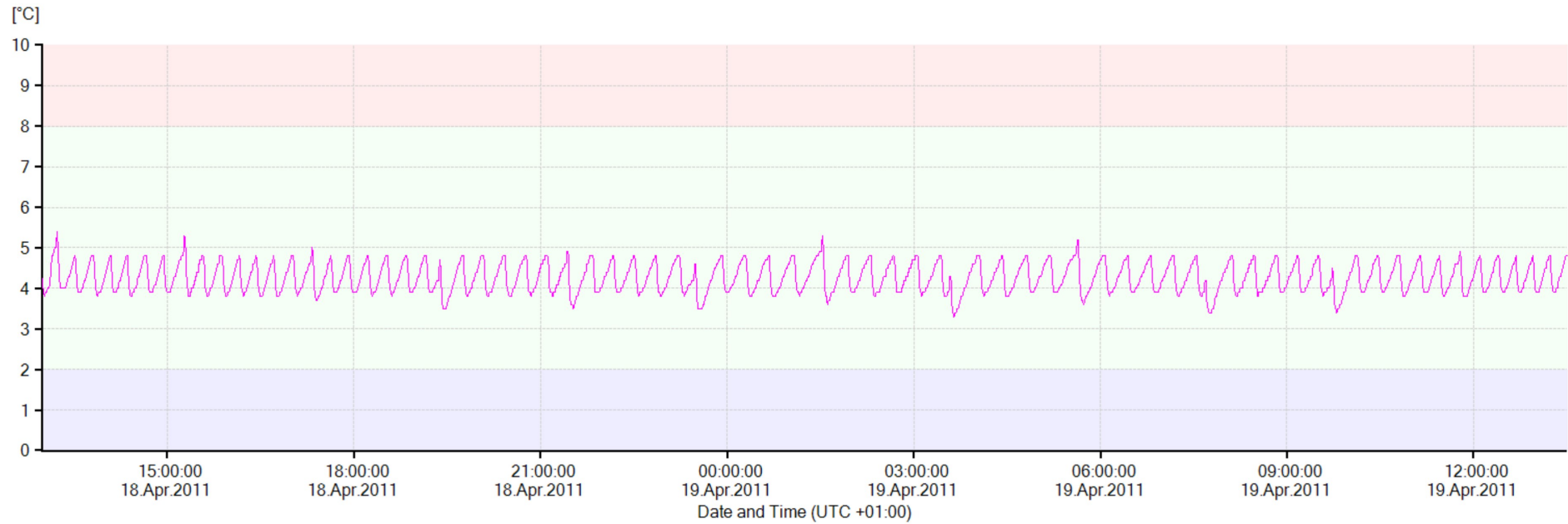
Statistics			
Range	18.Apr.2011 13:00:00 .. 19.Apr.2011 13:30:18	Min/Max Thresholds (T)	2.0 / 8.0 °C
Number of files	22	Min/Max Value (T)	2.7 / 5.9 °C
Number of sensors (T)	22		
Overall Average (T)	4.4 °C		

4.2 Mapping Location No: 1



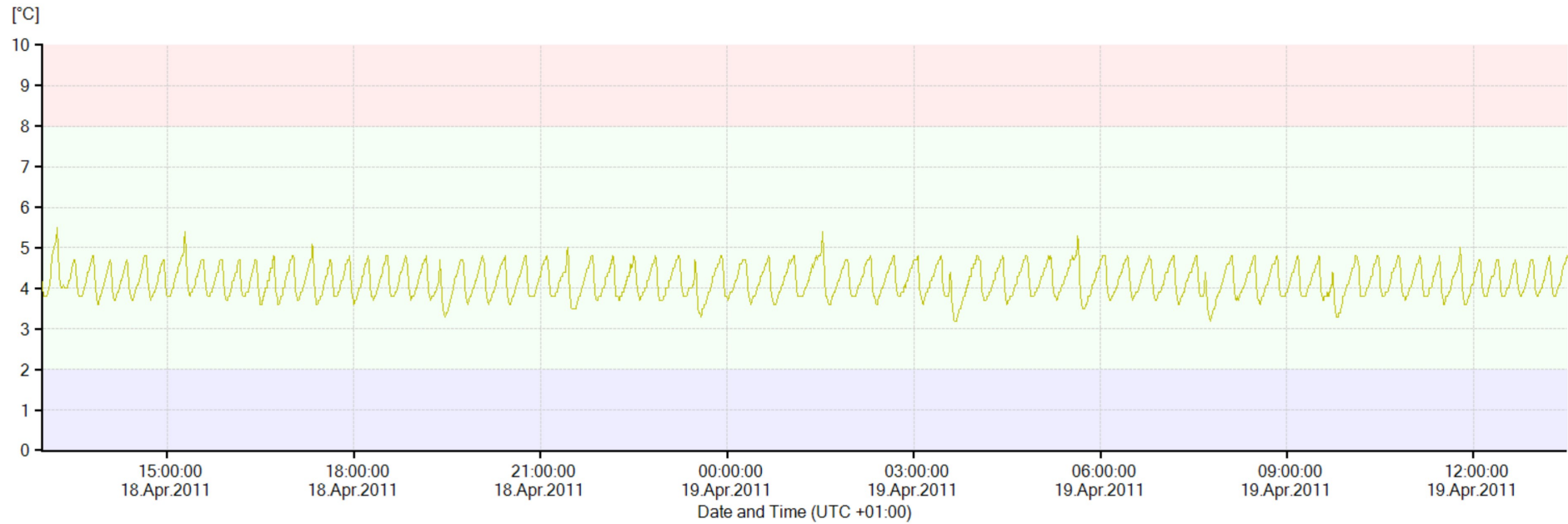
Statistics			
Logger ID	10026253	Min/Max Thresholds	2.0 / 8.0 °C
Range	18.Apr.2011 13:00:00 .. 19.Apr.2011 13:30:18	Time: Value > Max	0 m
Average	4.2 °C	Time: Value < Min	0 m
Variance	0.12	Time: Out of Min/Max	0 m
Std.Deviation	0.348	Time: Within Min/Max	1 d 0 h 30 m
Lowest/Highest Value	3.4 / 5.7 °C	MKT	4.2 °C

4.3 Mapping Location No: 2



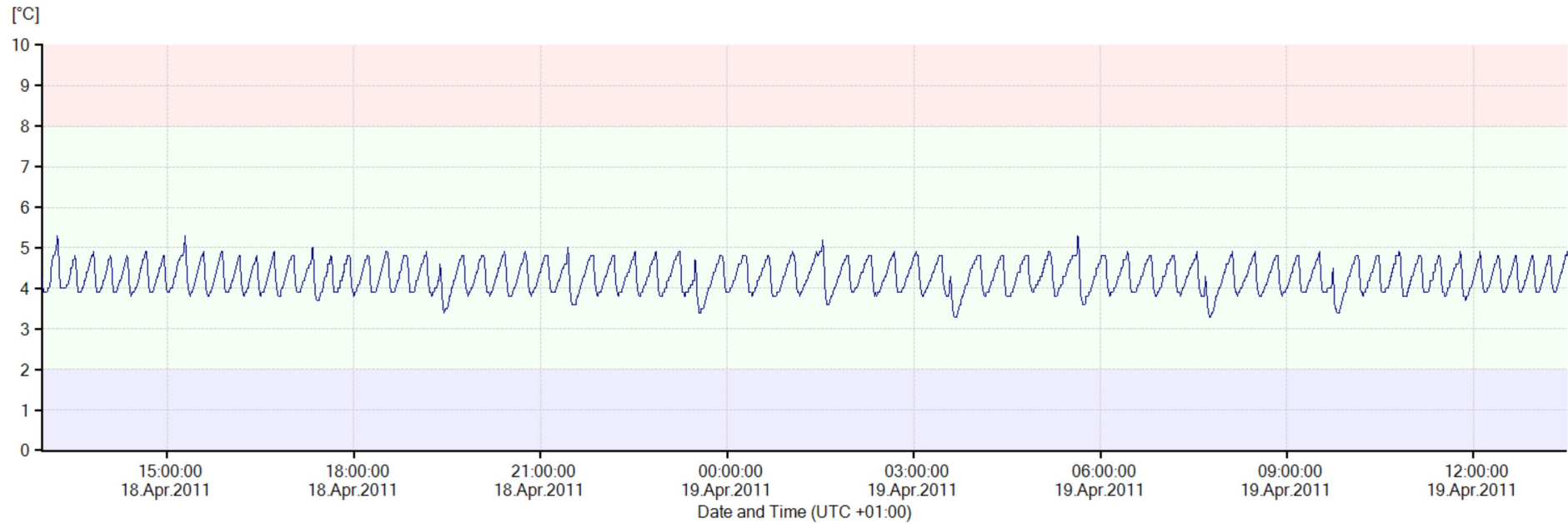
Statistics			
Logger ID	10023780	Min/Max Thresholds	2.0 / 8.0 °C
Range	18.Apr.2011 13:00:00 .. 19.Apr.2011 13:30:18	Time: Value > Max	0 m
Average	4.3 °C	Time: Value < Min	0 m
Variance	0.13	Time: Out of Min/Max	0 m
Std.Deviation	0.363	Time: Within Min/Max	1 d 0 h 30 m
Lowest/Highest Value	3.3 / 5.4 °C	MKT	4.3 °C

4.4 Mapping Location No: 3



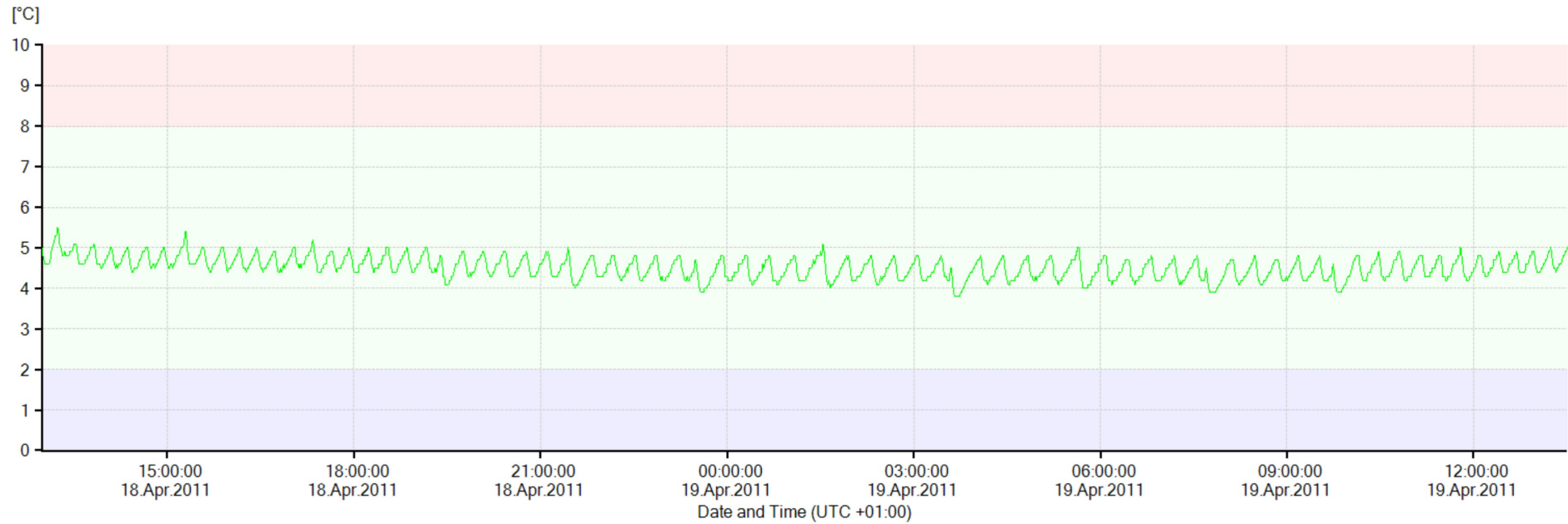
Statistics			
Logger ID	10035502	Min/Max Thresholds	2.0 / 8.0 °C
Range	18.Apr.2011 13:00:00 .. 19.Apr.2011 13:30:18	Time: Value > Max	0 m
Average	4.2 °C	Time: Value < Min	0 m
Variance	0.15	Time: Out of Min/Max	0 m
Std.Deviation	0.389	Time: Within Min/Max	1 d 0 h 31 m
Lowest/Highest Value	3.2 / 5.5 °C	MKT	4.2 °C

4.5 Mapping Location No: 4



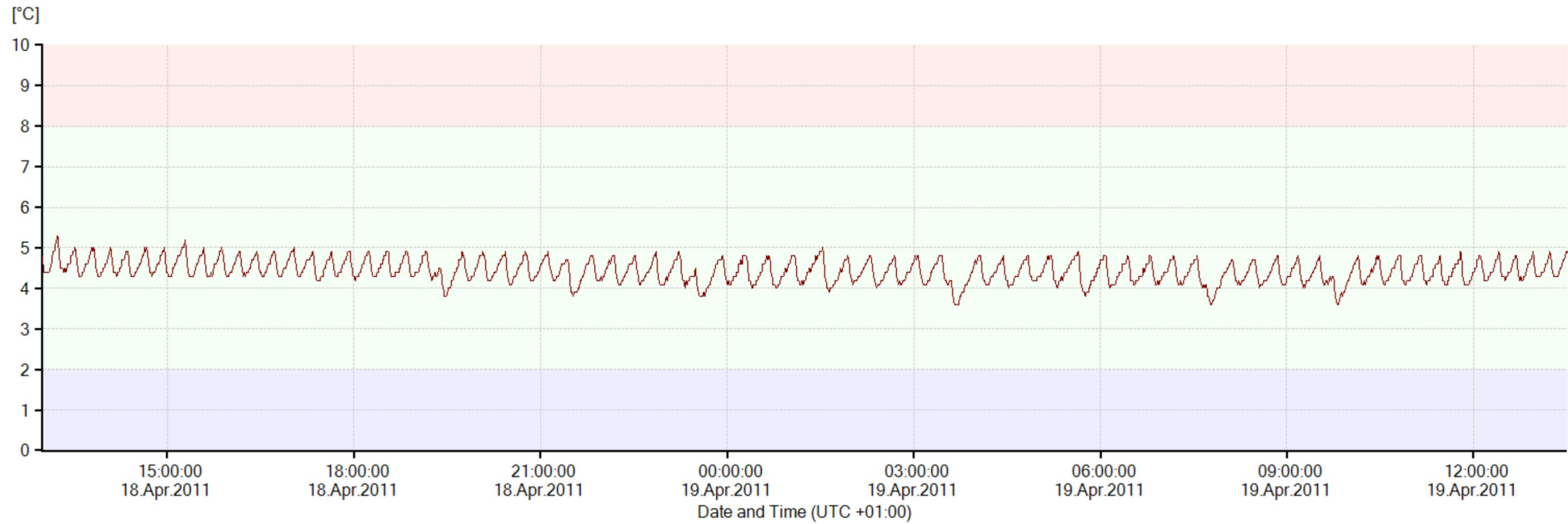
Statistics			
Logger ID	10041389	Min/Max Thresholds	2.0 / 8.0 °C
Range	18.Apr.2011 13:00:00 .. 19.Apr.2011 13:30:18	Time: Value > Max	0 m
Average	4.3 °C	Time: Value < Min	0 m
Variance	0.14	Time: Out of Min/Max	0 m
Std.Deviation	0.375	Time: Within Min/Max	1 d 0 h 31 m
Lowest/Highest Value	3.3 / 5.3 °C	MKT	4.3 °C

4.6 Mapping Location No: 5



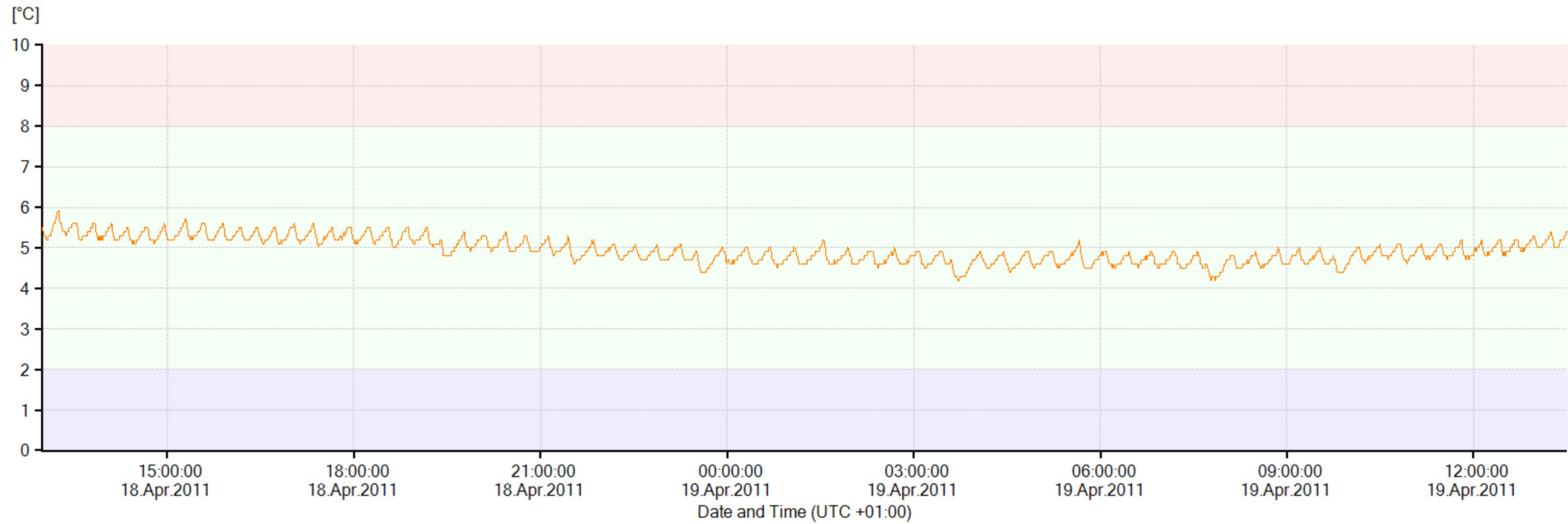
Statistics			
Logger ID	10041390	Min/Max Thresholds	2.0 / 8.0 °C
Range	18.Apr.2011 13:00:00 .. 19.Apr.2011 13:30:18	Time: Value > Max	0 m
Average	4.5 °C	Time: Value < Min	0 m
Variance	0.07	Time: Out of Min/Max	0 m
Std.Deviation	0.263	Time: Within Min/Max	1 d 0 h 30 m
Lowest/Highest Value	3.8 / 5.5 °C	MKT	4.5 °C

4.7 Mapping Location No: 6



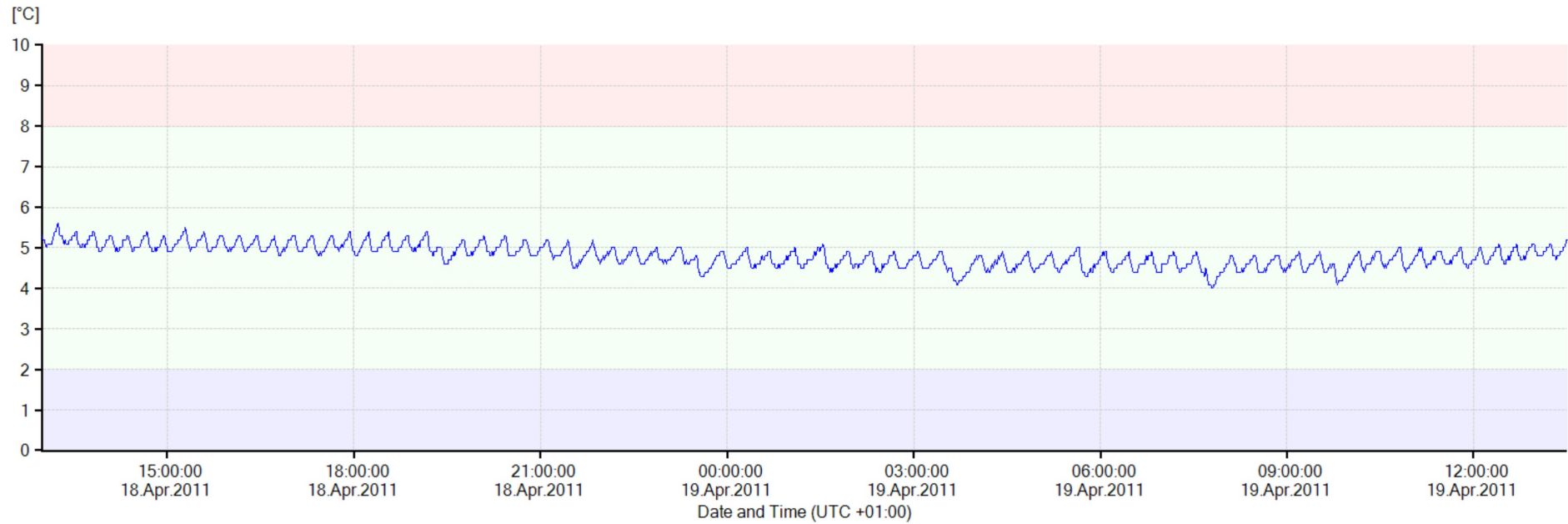
Statistics			
Logger ID	10041391	Min/Max Thresholds	2.0 / 8.0 °C
Range	18.Apr.2011 13:00:00 .. 19.Apr.2011 13:30:18	Time: Value > Max	0 m
Average	4.4 °C	Time: Value < Min	0 m
Variance	0.08	Time: Out of Min/Max	0 m
Std.Deviation	0.275	Time: Within Min/Max	1 d 0 h 30 m
Lowest/Highest Value	3.6 / 5.3 °C	MKT	4.4 °C

4.8 Mapping Location No: 7



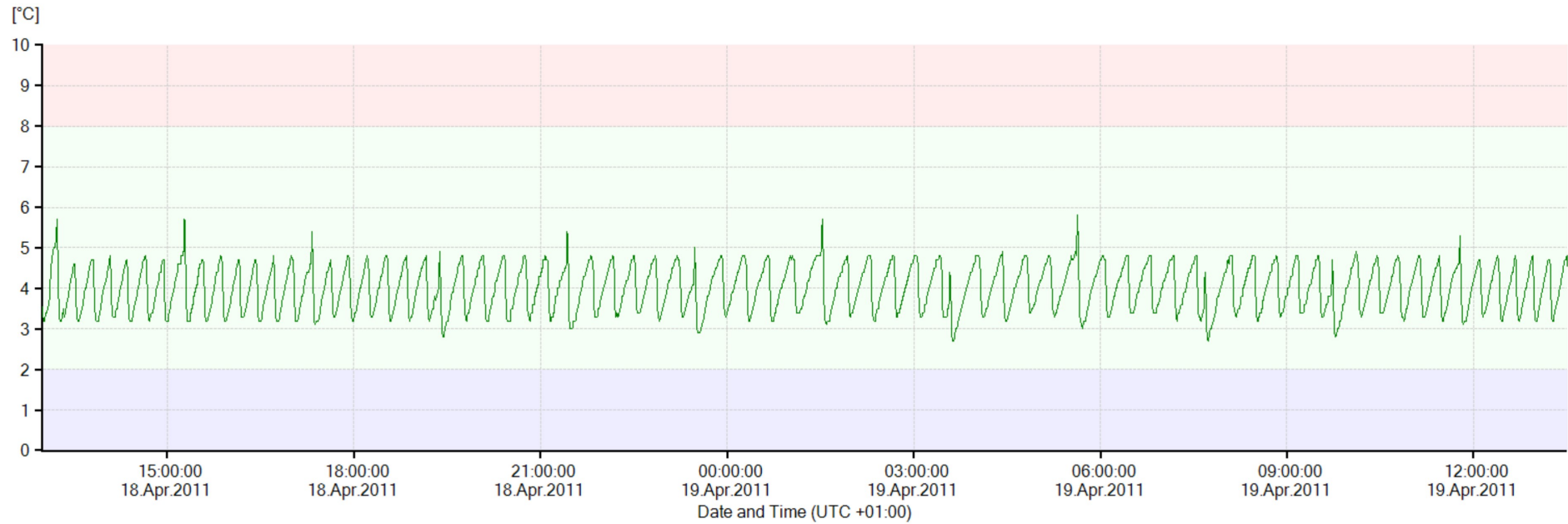
Statistics			
Logger ID	10041392	Min/Max Thresholds	2.0 / 8.0 °C
Range	18.Apr.2011 13:00:00 .. 19.Apr.2011 13:30:18	Time: Value > Max	0 m
Average	4.9 °C	Time: Value < Min	0 m
Variance	0.09	Time: Out of Min/Max	0 m
Std.Deviation	0.307	Time: Within Min/Max	1 d 0 h 30 m
Lowest/Highest Value	4.2 / 5.9 °C	MKT	4.9 °C

4.9 Mapping Location No: 8



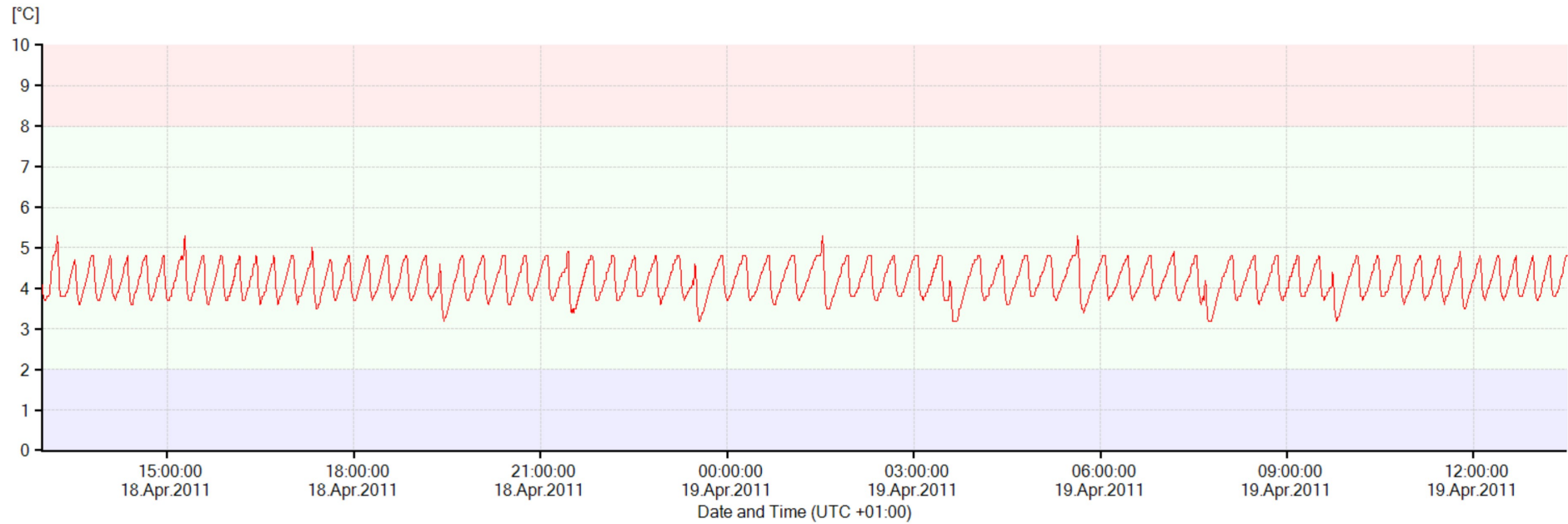
Statistics			
Logger ID	10041393	Min/Max Thresholds	2.0 / 8.0 °C
Range	18.Apr.2011 13:00:00 .. 19.Apr.2011 13:30:18	Time: Value > Max	0 m
Average	4.8 °C	Time: Value < Min	0 m
Variance	0.07	Time: Out of Min/Max	0 m
Std.Deviation	0.268	Time: Within Min/Max	1 d 0 h 30 m
Lowest/Highest Value	4.0 / 5.6 °C	MKT	4.8 °C

4.10 Mapping Location No: 9



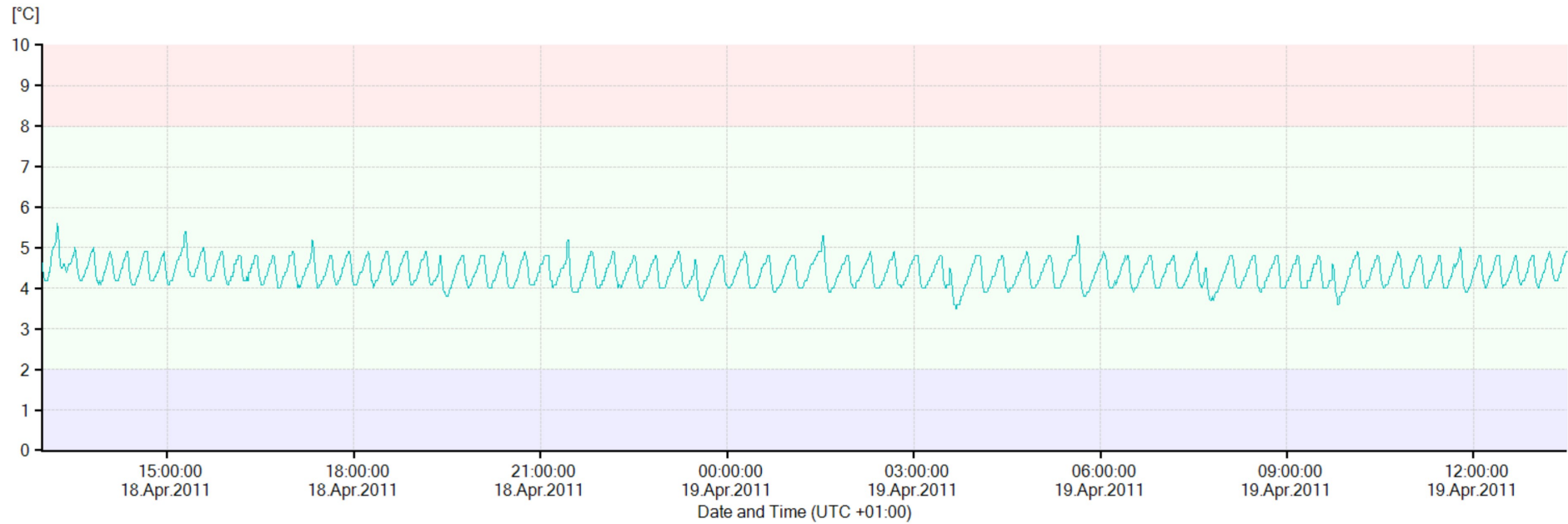
Statistics			
Logger ID	10041400	Min/Max Thresholds	2.0 / 8.0 °C
Range	18.Apr.2011 13:00:00 .. 19.Apr.2011 13:30:18	Time: Value > Max	0 m
Average	4.0 °C	Time: Value < Min	0 m
Variance	0.31	Time: Out of Min/Max	0 m
Std.Deviation	0.561	Time: Within Min/Max	1 d 0 h 30 m
Lowest/Highest Value	2.7 / 5.8 °C	MKT	4.0 °C

4.11 Mapping Location No: 10



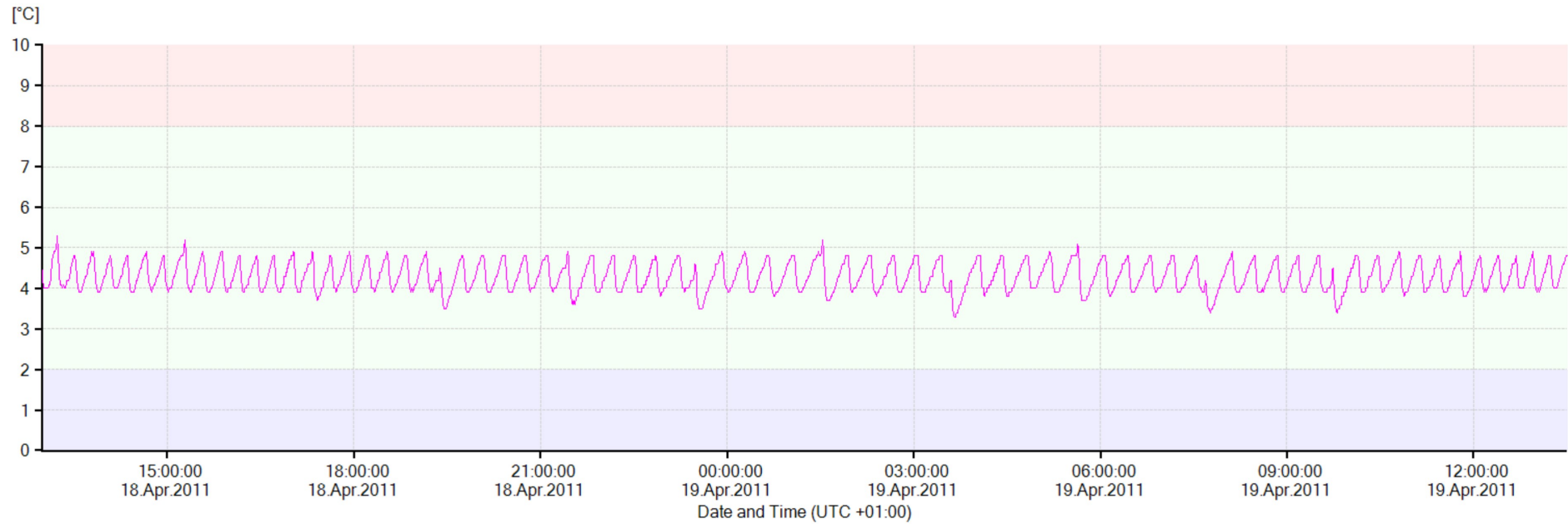
Statistics			
Logger ID	10041401	Min/Max Thresholds	2.0 / 8.0 °C
Range	18.Apr.2011 13:00:00 .. 19.Apr.2011 13:30:18	Time: Value > Max	0 m
Average	4.2 °C	Time: Value < Min	0 m
Variance	0.17	Time: Out of Min/Max	0 m
Std.Deviation	0.413	Time: Within Min/Max	1 d 0 h 31 m
Lowest/Highest Value	3.2 / 5.3 °C	MKT	4.2 °C

4.12 Mapping Location No: 11



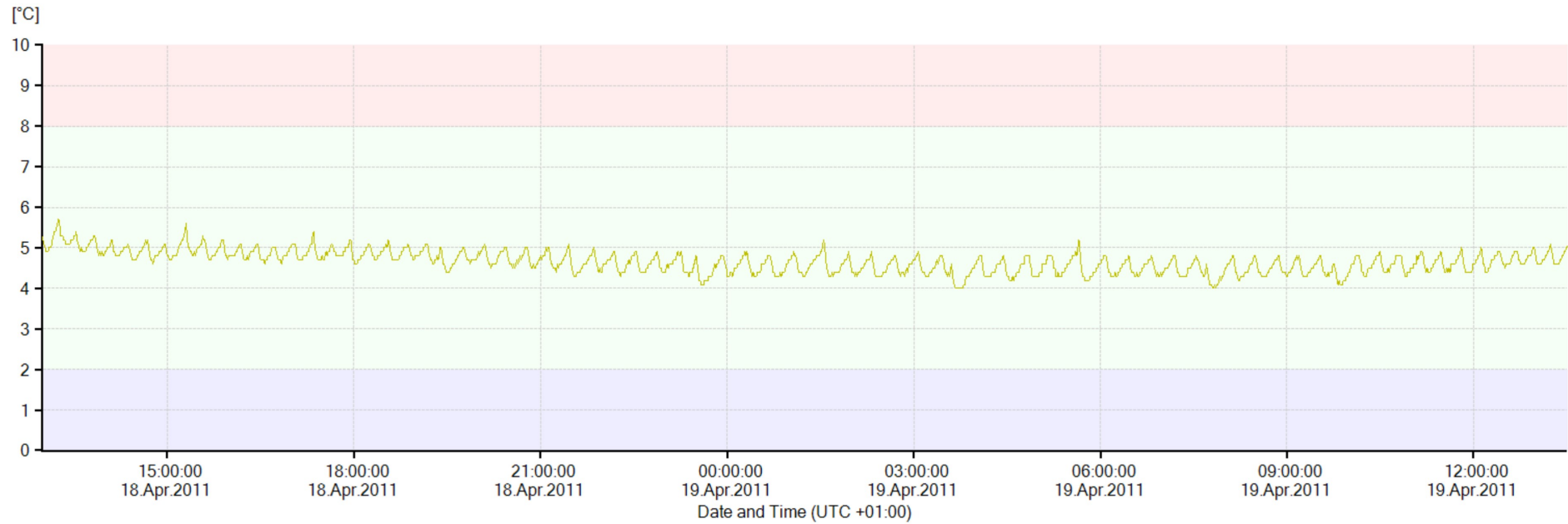
Statistics			
Logger ID	10041402	Min/Max Thresholds	2.0 / 8.0 °C
Range	18.Apr.2011 13:00:00 .. 19.Apr.2011 13:30:18	Time: Value > Max	0 m
Average	4.4 °C	Time: Value < Min	0 m
Variance	0.10	Time: Out of Min/Max	0 m
Std.Deviation	0.319	Time: Within Min/Max	1 d 0 h 31 m
Lowest/Highest Value	3.5 / 5.6 °C	MKT	4.4 °C

4.13 Mapping Location No: 12



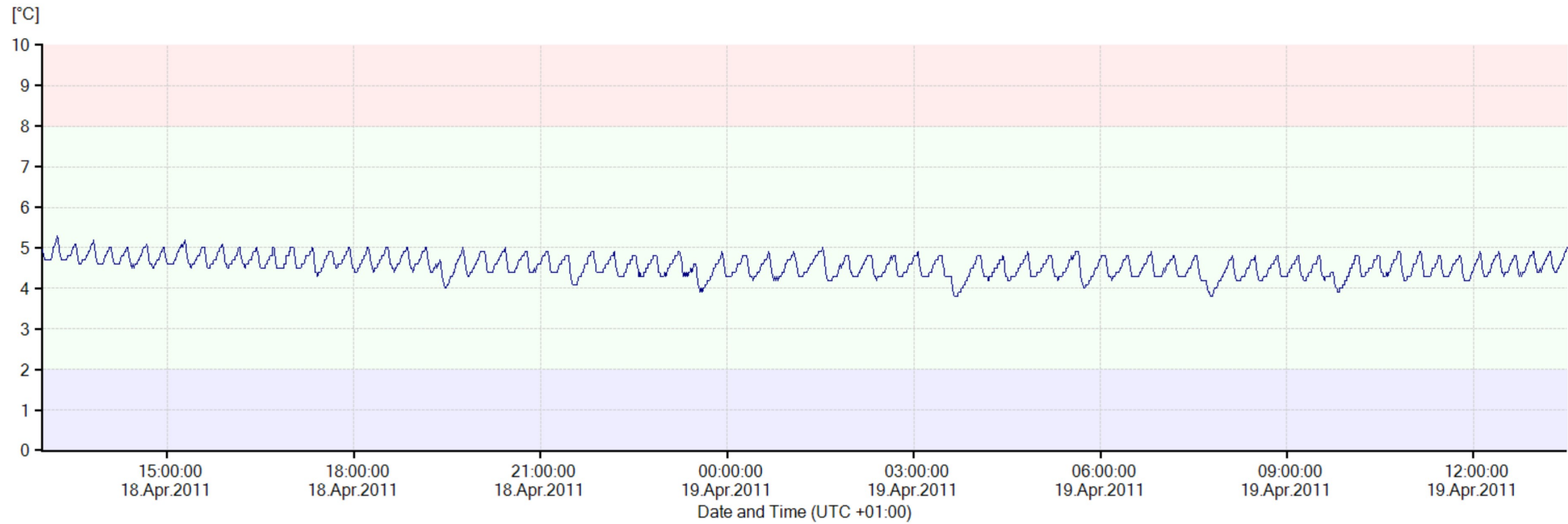
Statistics			
Logger ID	10041403	Min/Max Thresholds	2.0 / 8.0 °C
Range	18.Apr.2011 13:00:00 .. 19.Apr.2011 13:30:18	Time: Value > Max	0 m
Average	4.3 °C	Time: Value < Min	0 m
Variance	0.12	Time: Out of Min/Max	0 m
Std.Deviation	0.351	Time: Within Min/Max	1 d 0 h 31 m
Lowest/Highest Value	3.3 / 5.3 °C	MKT	4.3 °C

4.14 Mapping Location No: 13



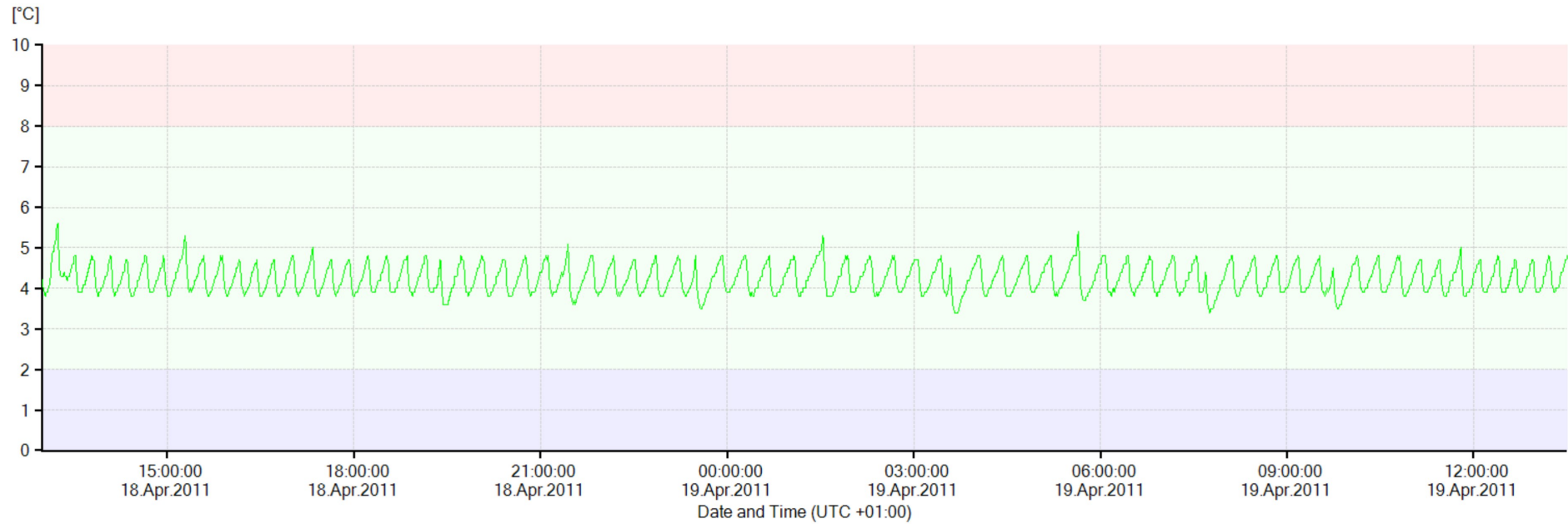
Statistics			
Logger ID	10041404	Min/Max Thresholds	2.0 / 8.0 °C
Range	18.Apr.2011 13:00:00 .. 19.Apr.2011 13:30:18	Time: Value > Max	0 m
Average	4.7 °C	Time: Value < Min	0 m
Variance	0.07	Time: Out of Min/Max	0 m
Std.Deviation	0.263	Time: Within Min/Max	1 d 0 h 30 m
Lowest/Highest Value	4.0 / 5.7 °C	MKT	4.7 °C

4.15 Mapping Location No: 14



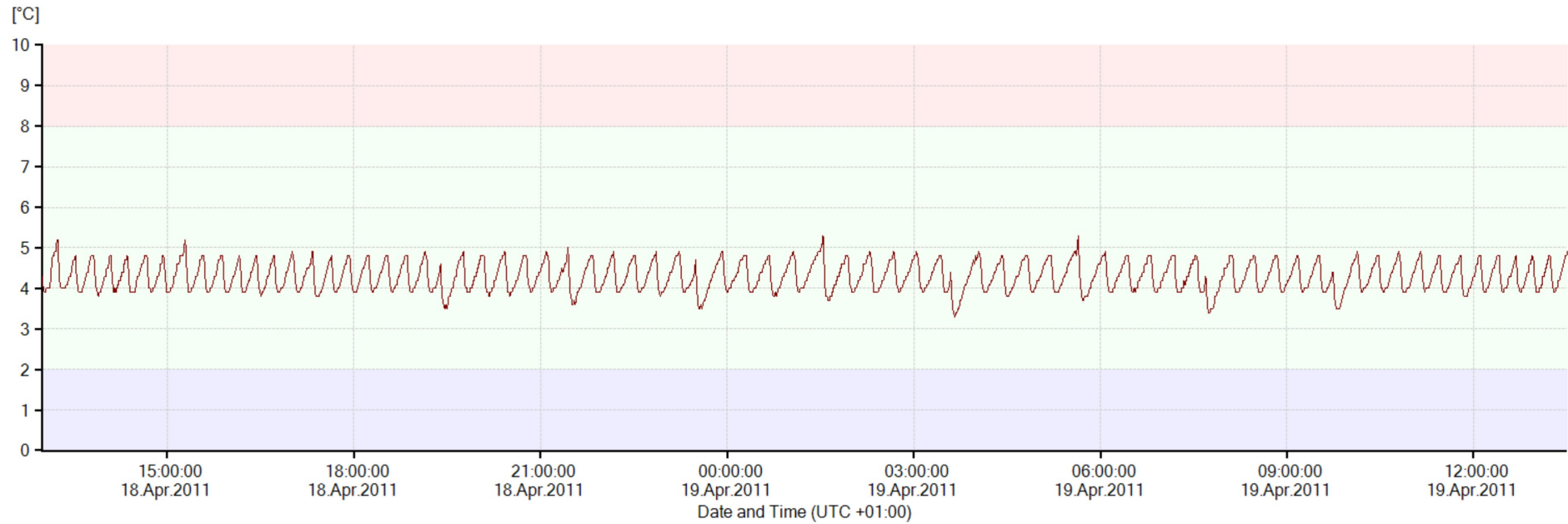
Statistics			
Logger ID	10041405	Min/Max Thresholds	2.0 / 8.0 °C
Range	18.Apr.2011 13:00:00 .. 19.Apr.2011 13:30:18	Time: Value > Max	0 m
Average	4.6 °C	Time: Value < Min	0 m
Variance	0.06	Time: Out of Min/Max	0 m
Std.Deviation	0.247	Time: Within Min/Max	1 d 0 h 31 m
Lowest/Highest Value	3.8 / 5.3 °C	MKT	4.6 °C

4.16 Mapping Location No: 15



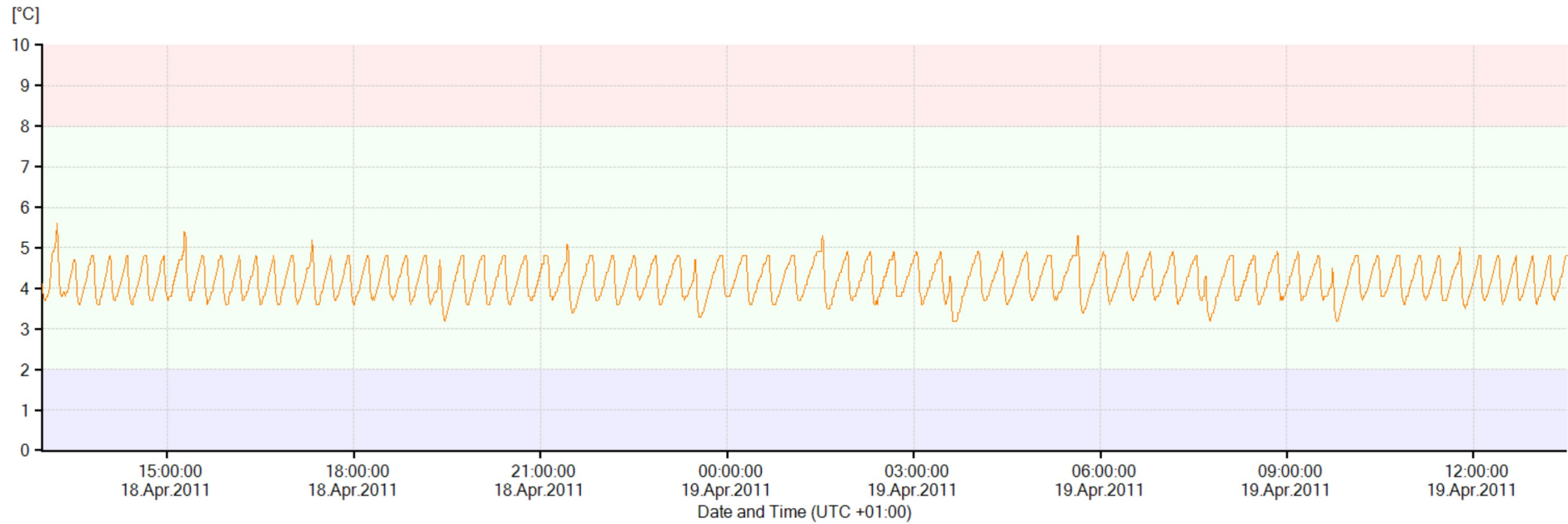
Statistics			
Logger ID	10041406	Min/Max Thresholds	2.0 / 8.0 °C
Range	18.Apr.2011 13:00:00 .. 19.Apr.2011 13:30:18	Time: Value > Max	0 m
Average	4.2 °C	Time: Value < Min	0 m
Variance	0.12	Time: Out of Min/Max	0 m
Std.Deviation	0.349	Time: Within Min/Max	1 d 0 h 30 m
Lowest/Highest Value	3.4 / 5.6 °C	MKT	4.2 °C

4.17 Mapping Location No: 16



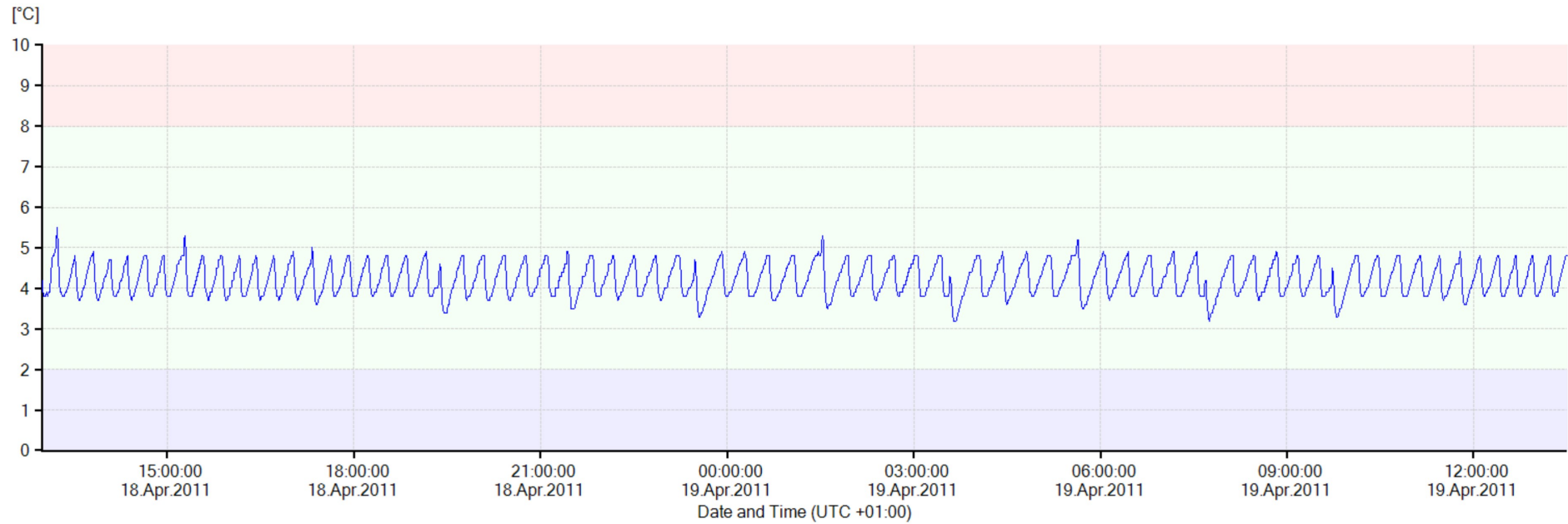
Statistics			
Logger ID	10041407	Min/Max Thresholds	2.0 / 8.0 °C
Range	18.Apr.2011 13:00:00 .. 19.Apr.2011 13:30:18	Time: Value > Max	0 m
Average	4.3 °C	Time: Value < Min	0 m
Variance	0.13	Time: Out of Min/Max	0 m
Std.Deviation	0.354	Time: Within Min/Max	1 d 0 h 30 m
Lowest/Highest Value	3.3 / 5.3 °C	MKT	4.3 °C

4.18 Mapping Location No: 17



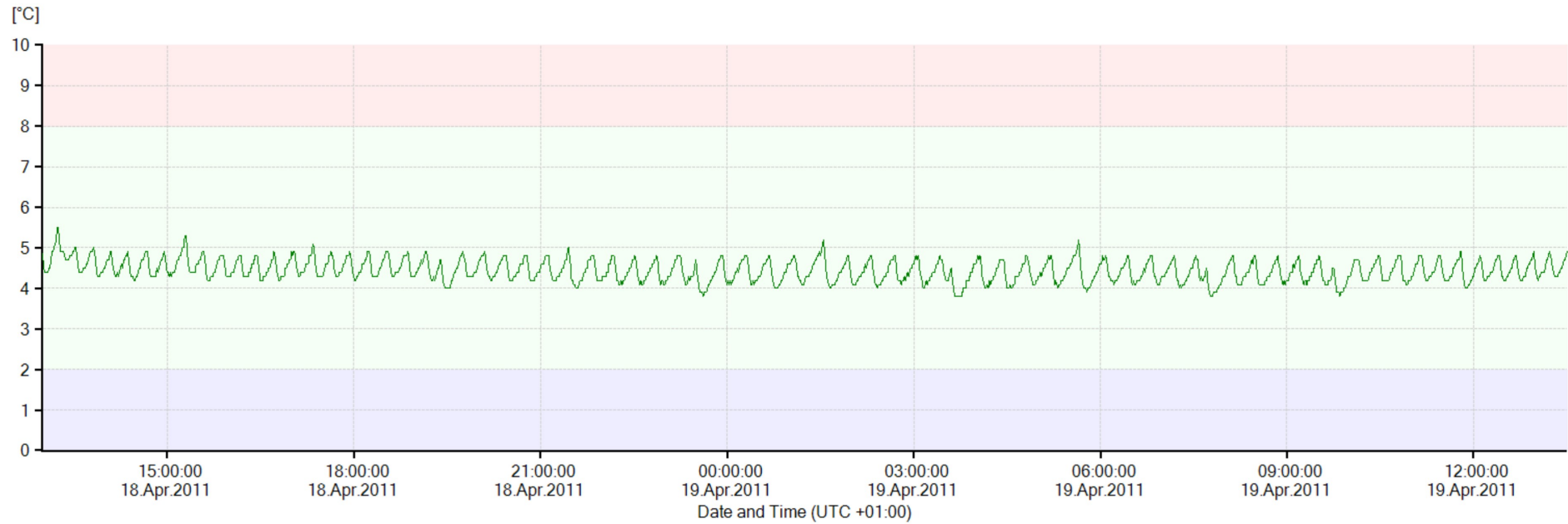
Statistics			
Logger ID	10041409	Min/Max Thresholds	2.0 / 8.0 °C
Range	18.Apr.2011 13:00:00 .. 19.Apr.2011 13:30:18	Time: Value > Max	0 m
Average	4.2 °C	Time: Value < Min	0 m
Variance	0.19	Time: Out of Min/Max	0 m
Std.Deviation	0.432	Time: Within Min/Max	1 d 0 h 30 m
Lowest/Highest Value	3.2 / 5.6 °C	MKT	4.2 °C

4.19 Mapping Location No: 18



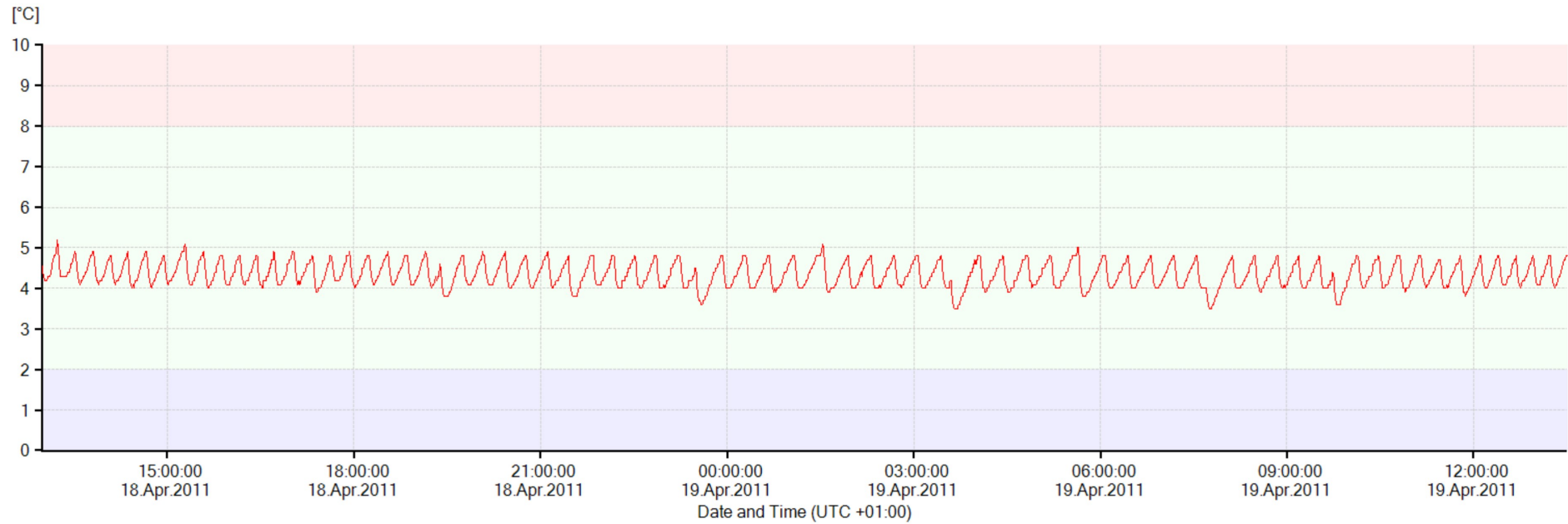
Statistics			
Logger ID	10041410	Min/Max Thresholds	2.0 / 8.0 °C
Range	18.Apr.2011 13:00:00 .. 19.Apr.2011 13:30:18	Time: Value > Max	0 m
Average	4.2 °C	Time: Value < Min	0 m
Variance	0.16	Time: Out of Min/Max	0 m
Std.Deviation	0.399	Time: Within Min/Max	1 d 0 h 30 m
Lowest/Highest Value	3.2 / 5.5 °C	MKT	4.2 °C

4.20 Mapping Location No: 19



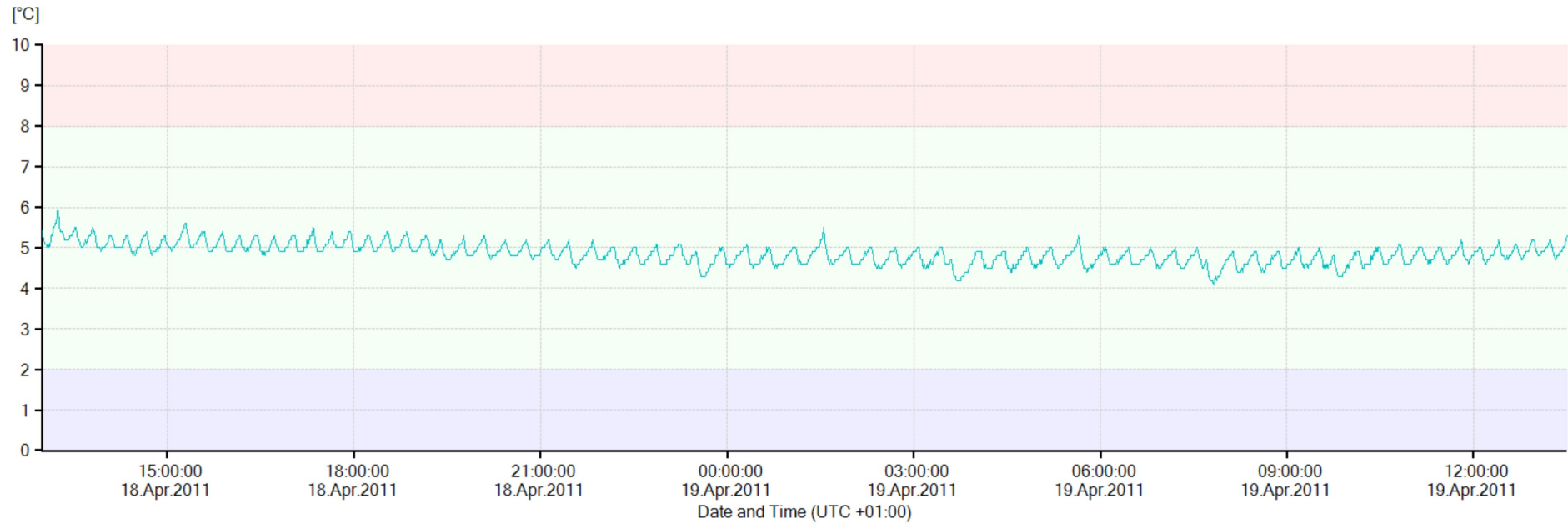
Statistics			
Logger ID	10041411	Min/Max Thresholds	2.0 / 8.0 °C
Range	18.Apr.2011 13:00:00 .. 19.Apr.2011 13:30:18	Time: Value > Max	0 m
Average	4.4 °C	Time: Value < Min	0 m
Variance	0.07	Time: Out of Min/Max	0 m
Std.Deviation	0.266	Time: Within Min/Max	1 d 0 h 31 m
Lowest/Highest Value	3.8 / 5.5 °C	MKT	4.4 °C

4.21 Mapping Location No: 20



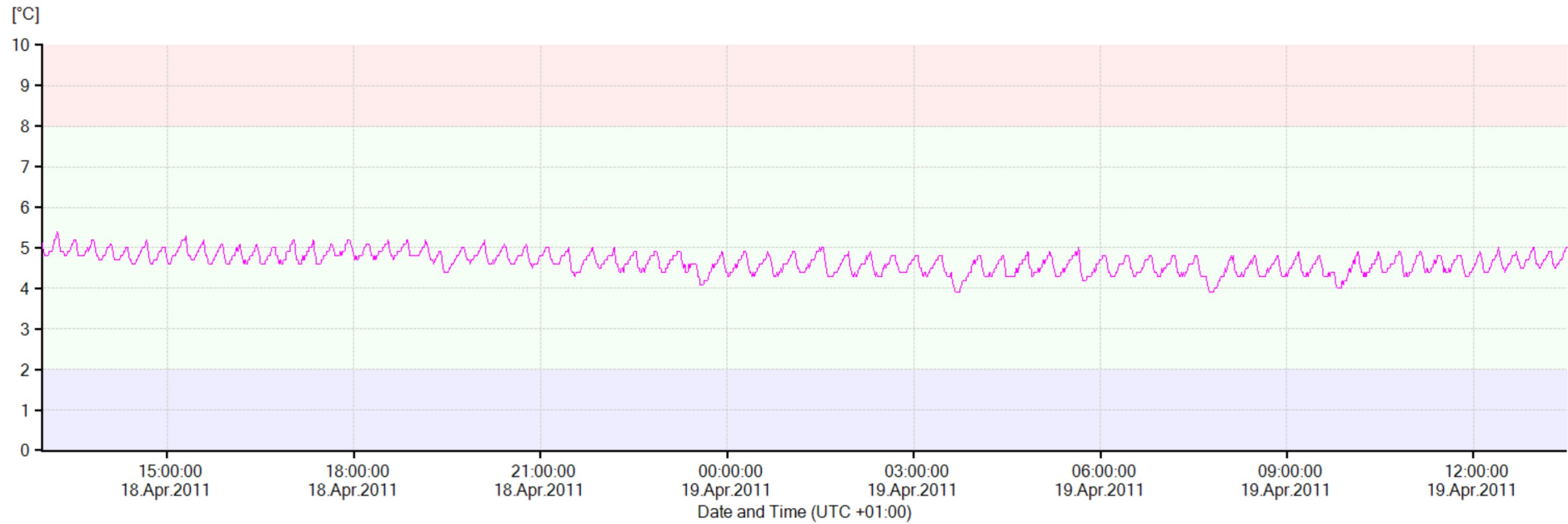
Statistics			
Logger ID	10041412	Min/Max Thresholds	2.0 / 8.0 °C
Range	18.Apr.2011 13:00:00 .. 19.Apr.2011 13:30:18	Time: Value > Max	0 m
Average	4.3 °C	Time: Value < Min	0 m
Variance	0.09	Time: Out of Min/Max	0 m
Std.Deviation	0.302	Time: Within Min/Max	1 d 0 h 31 m
Lowest/Highest Value	3.5 / 5.2 °C	MKT	4.4 °C

4.22 Mapping Location No: 21



Statistics			
Logger ID	10041413	Min/Max Thresholds	2.0 / 8.0 °C
Range	18.Apr.2011 13:00:00 .. 19.Apr.2011 13:30:18	Time: Value > Max	0 m
Average	4.9 °C	Time: Value < Min	0 m
Variance	0.06	Time: Out of Min/Max	0 m
Std.Deviation	0.251	Time: Within Min/Max	1 d 0 h 31 m
Lowest/Highest Value	4.1 / 5.9 °C	MKT	4.9 °C

4.23 Mapping Location No: 22



Statistics			
Logger ID	10041414	Min/Max Thresholds	2.0 / 8.0 °C
Range	18.Apr.2011 13:00:00 .. 19.Apr.2011 13:30:18	Time: Value > Max	0 m
Average	4.6 °C	Time: Value < Min	0 m
Variance	0.06	Time: Out of Min/Max	0 m
Std.Deviation	0.248	Time: Within Min/Max	1 d 0 h 31 m
Lowest/Highest Value	3.9 / 5.4 °C	MKT	4.7 °C

5. Used LIBERO PDF Reports

Measuring Point	PDF Report File Name	Logger ID	Report No.
Mapping Location No: 1	MP1.pdf	10026253	51425303
Mapping Location No: 2	MP2.pdf	10023780	83456503
Mapping Location No: 3	MP3.pdf	10035502	10075323
Mapping Location No: 4	MP4.pdf	10041389	68535715
Mapping Location No: 5	MP5.pdf	10041390	34421935
Mapping Location No: 6	MP6.pdf	10041391	76856791
Mapping Location No: 7	MP7.pdf	10041392	24711215
Mapping Location No: 8	MP8.pdf	10041393	90306543
Mapping Location No: 9	MP9.pdf	10041400	3633495
Mapping Location No: 10	MP10.pdf	10041401	80859335
Mapping Location No: 11	MP11.pdf	10041402	68978915
Mapping Location No: 12	MP12.pdf	10041403	38992707
Mapping Location No: 13	MP13.pdf	10041404	36005487
Mapping Location No: 14	MP14.pdf	10041405	55211503
Mapping Location No: 15	MP15.pdf	10041406	16984331
Mapping Location No: 16	MP16.pdf	10041407	73117507
Mapping Location No: 17	MP17.pdf	10041409	27226451
Mapping Location No: 18	MP18.pdf	10041410	41956855
Mapping Location No: 19	MP19.pdf	10041411	81459363
Mapping Location No: 20	MP20.pdf	10041412	16250635
Mapping Location No: 21	MP21.pdf	10041413	21858499
Mapping Location No: 22	MP22.pdf	10041414	50819219

6. Device Configuration

Profile

Profile Checksum: 3.531.920.535 Profile-ID:

Device

Device Type: Ti1 Current State: Arrived
 Logger ID: 10026253 Remaining Battery: 206 d
 Configured by: S193, ELPRO-PC05/ELPRO 04.Apr.2011 15:09:58

Description

Report Title: Pfizer 2-8 Temperature Mapping
 Add. Info. Line 1: Pfizer/ Dawson Cold Store
 Add. Info. Line 2:
 Add. Info. Line 3: Mapping Location No: 1
 Add. Info. Line 4: (See ELPRO Mapping Location Documentation)
 Add. Info. Line 5:
 Add. Info. Line 6:
 Add. Info. Line 7:
 Add. Info. Line 8:
 Filename: Pfizer Mapping

Logging

Log Interval / Duration: 1 m / 11 d 2 h 40 m Start Mode: Start after pressing a key
 Log Mode: Start/Stop Transit Initial State: Start in Transit mode
 MKT Activation Energy: 83 kJ/mol

Alarm Conditions

Alarm Mode: OFF (Alarm disabled)

PDF Options

Inspection Range: Graphics & Alarm-handling "Last Transit - Arrived"
 PDF Customizing: Show complete Report (Alarm Conditions / Alarm Status / Logging Results)
 PDF Language: English
 Y-Axis Scaling of Chart: Automatic Zoom

Format Settings

Time Zone: GMT +00:00 Time Format: 24h
 Add 1 hour: Yes Temperature Unit: °C
 Date Format: DD.MMM.YYYY Decimal Separator: . (Period)

Handling Options

Button Mode: Full functionality: Transit - Arrived / Display-Statistics
 Display Mode: Always show current value
 Show Profile-ID on LCD: No
 Start Delay: Yes Transit Delay: No
 Delay Time: 30 m

Profile

Profile Checksum: 1.667.745.382 Profile-ID:

Device

Device Type: Ti1 Current State: Arrived
 Logger ID: 10023780 Remaining Battery: 69 d
 Configured by: S193, ELPRO-PC05/ELPRO 04.Apr.2011 15:11:31

Description

Report Title: Pfizer 2-8 Temperature Mapping
 Add. Info. Line 1: Pfizer/ Dawson Cold Store
 Add. Info. Line 2:
 Add. Info. Line 3: Mapping Location No: 2
 Add. Info. Line 4: (See ELPRO Mapping Location Documentation)
 Add. Info. Line 5:
 Add. Info. Line 6:
 Add. Info. Line 7:
 Add. Info. Line 8:
 Filename: Pfizer Mapping

Logging

Log Interval / Duration: 1 m / 11 d 2 h 40 m Start Mode: Start after pressing a key
 Log Mode: Start/Stop Transit Initial State: Start in Transit mode
 MKT Activation Energy: 83 kJ/mol

Alarm Conditions

Alarm Mode: OFF (Alarm disabled)

PDF Options

Inspection Range: Graphics & Alarm-handling "Last Transit - Arrived"
 PDF Customizing: Show complete Report (Alarm Conditions / Alarm Status / Logging Results)
 PDF Language: English
 Y-Axis Scaling of Chart: Automatic Zoom

Format Settings

Time Zone: GMT +00:00 Time Format: 24h
 Add 1 hour: Yes Temperature Unit: °C
 Date Format: DD.MMM.YYYY Decimal Separator: . (Period)

Handling Options

Button Mode: Full functionality: Transit - Arrived / Display-Statistics
 Display Mode: Always show current value
 Show Profile-ID on LCD: No
 Start Delay: Yes Transit Delay: No
 Delay Time: 30 m

Profile

Profile Checksum: 205.076.425 Profile-ID:

Device

Device Type: Ti1 Current State: Arrived
 Logger ID: 10035502 Remaining Battery: 386 d
 Configured by: S193, ELPRO-PC05/ELPRO 04.Apr.2011 15:12:15

Description

Report Title: Pfizer 2-8 Temperature Mapping
 Add. Info. Line 1: Pfizer/ Dawson Cold Store
 Add. Info. Line 2:
 Add. Info. Line 3: Mapping Location No: 3
 Add. Info. Line 4: (See ELPRO Mapping Location Documentation)
 Add. Info. Line 5:
 Add. Info. Line 6:
 Add. Info. Line 7:
 Add. Info. Line 8:
 Filename: Pfizer Mapping

Logging

Log Interval / Duration: 1 m / 11 d 2 h 40 m Start Mode: Start after pressing a key
 Log Mode: Start/Stop Transit Initial State: Start in Transit mode
 MKT Activation Energy: 83 kJ/mol

Alarm Conditions

Alarm Mode: OFF (Alarm disabled)

PDF Options

Inspection Range: Graphics & Alarm-handling "Last Transit - Arrived"
 PDF Customizing: Show complete Report (Alarm Conditions / Alarm Status / Logging Results)
 PDF Language: English
 Y-Axis Scaling of Chart: Automatic Zoom

Format Settings

Time Zone: GMT +00:00 Time Format: 24h
 Add 1 hour: Yes Temperature Unit: °C
 Date Format: DD.MMM.YYYY Decimal Separator: . (Period)

Handling Options

Button Mode: Full functionality: Transit - Arrived / Display-Statistics
 Display Mode: Always show current value
 Show Profile-ID on LCD: No
 Start Delay: Yes Transit Delay: No
 Delay Time: 30 m

Profile

Profile Checksum: 3.687.900.613 Profile-ID:

Device

Device Type: Ti1 Current State: Arrived
 Logger ID: 10041389 Remaining Battery: 402 d
 Configured by: S193, ELPRO-PC05/ELPRO 04.Apr.2011 15:13:02

Description

Report Title: Pfizer 2-8 Temperature Mapping
 Add. Info. Line 1: Pfizer/ Dawson Cold Store
 Add. Info. Line 2:
 Add. Info. Line 3: Mapping Location No: 4
 Add. Info. Line 4: (See ELPRO Mapping Location Documentation)
 Add. Info. Line 5:
 Add. Info. Line 6:
 Add. Info. Line 7:
 Add. Info. Line 8:
 Filename: Pfizer Mapping

Logging

Log Interval / Duration: 1 m / 11 d 2 h 40 m Start Mode: Start after pressing a key
 Log Mode: Start/Stop Transit Initial State: Start in Transit mode
 MKT Activation Energy: 83 kJ/mol

Alarm Conditions

Alarm Mode: OFF (Alarm disabled)

PDF Options

Inspection Range: Graphics & Alarm-handling "Last Transit - Arrived"
 PDF Customizing: Show complete Report (Alarm Conditions / Alarm Status / Logging Results)
 PDF Language: English
 Y-Axis Scaling of Chart: Automatic Zoom

Format Settings

Time Zone: GMT +00:00 Time Format: 24h
 Add 1 hour: Yes Temperature Unit: °C
 Date Format: DD.MMM.YYYY Decimal Separator: . (Period)

Handling Options

Button Mode: Full functionality: Transit - Arrived / Display-Statistics
 Display Mode: Always show current value
 Show Profile-ID on LCD: No
 Start Delay: Yes Transit Delay: No
 Delay Time: 30 m

Profile

Profile Checksum: 3.029.210.218 Profile-ID:

Device

Device Type: Ti1 Current State: Arrived
 Logger ID: 10041390 Remaining Battery: 402 d
 Configured by: S193, ELPRO-PC05/ELPRO 04.Apr.2011 15:14:22

Description

Report Title: Pfizer 2-8 Temperature Mapping
 Add. Info. Line 1: Pfizer/ Dawson Cold Store
 Add. Info. Line 2:
 Add. Info. Line 3: Mapping Location No: 5
 Add. Info. Line 4: (See ELPRO Mapping Location Documentation)
 Add. Info. Line 5:
 Add. Info. Line 6:
 Add. Info. Line 7:
 Add. Info. Line 8:
 Filename: Pfizer Mapping

Logging

Log Interval / Duration: 1 m / 11 d 2 h 40 m Start Mode: Start after pressing a key
 Log Mode: Start/Stop Transit Initial State: Start in Transit mode
 MKT Activation Energy: 83 kJ/mol

Alarm Conditions

Alarm Mode: OFF (Alarm disabled)

PDF Options

Inspection Range: Graphics & Alarm-handling "Last Transit - Arrived"
 PDF Customizing: Show complete Report (Alarm Conditions / Alarm Status / Logging Results)
 PDF Language: English
 Y-Axis Scaling of Chart: Automatic Zoom

Format Settings

Time Zone: GMT +00:00 Time Format: 24h
 Add 1 hour: Yes Temperature Unit: °C
 Date Format: DD.MMM.YYYY Decimal Separator: . (Period)

Handling Options

Button Mode: Full functionality: Transit - Arrived / Display-Statistics
 Display Mode: Always show current value
 Show Profile-ID on LCD: No
 Start Delay: Yes Transit Delay: No
 Delay Time: 30 m

Profile

Profile Checksum: 091.031.195 Profile-ID:

Device

Device Type: Ti1 Current State: Arrived
 Logger ID: 10041391 Remaining Battery: 402 d
 Configured by: S193, ELPRO-PC05/ELPRO 04.Apr.2011 15:15:02

Description

Report Title: Pfizer 2-8 Temperature Mapping
 Add. Info. Line 1: Pfizer/ Dawson Cold Store
 Add. Info. Line 2:
 Add. Info. Line 3: Mapping Location No: 6
 Add. Info. Line 4: (See ELPRO Mapping Location Documentation)
 Add. Info. Line 5:
 Add. Info. Line 6:
 Add. Info. Line 7:
 Add. Info. Line 8:
 Filename: Pfizer Mapping

Logging

Log Interval / Duration: 1 m / 11 d 2 h 40 m Start Mode: Start after pressing a key
 Log Mode: Start/Stop Transit Initial State: Start in Transit mode
 MKT Activation Energy: 83 kJ/mol

Alarm Conditions

Alarm Mode: OFF (Alarm disabled)

PDF Options

Inspection Range: Graphics & Alarm-handling "Last Transit - Arrived"
 PDF Customizing: Show complete Report (Alarm Conditions / Alarm Status / Logging Results)
 PDF Language: English
 Y-Axis Scaling of Chart: Automatic Zoom

Format Settings

Time Zone: GMT +00:00 Time Format: 24h
 Add 1 hour: Yes Temperature Unit: °C
 Date Format: DD.MMM.YYYY Decimal Separator: . (Period)

Handling Options

Button Mode: Full functionality: Transit - Arrived / Display-Statistics
 Display Mode: Always show current value
 Show Profile-ID on LCD: No
 Start Delay: Yes Transit Delay: No
 Delay Time: 30 m

Profile

Profile Checksum: 1.781.790.516 Profile-ID:

Device

Device Type: Ti1 Current State: Arrived
 Logger ID: 10041392 Remaining Battery: 402 d
 Configured by: S193, ELPRO-PC05/ELPRO 04.Apr.2011 15:16:28

Description

Report Title: Pfizer 2-8 Temperature Mapping
 Add. Info. Line 1: Pfizer/ Dawson Cold Store
 Add. Info. Line 2:
 Add. Info. Line 3: Mapping Location No: 7
 Add. Info. Line 4: (See ELPRO Mapping Location Documentation)
 Add. Info. Line 5:
 Add. Info. Line 6:
 Add. Info. Line 7:
 Add. Info. Line 8:
 Filename: Pfizer Mapping

Logging

Log Interval / Duration: 1 m / 11 d 2 h 40 m Start Mode: Start after pressing a key
 Log Mode: Start/Stop Transit Initial State: Start in Transit mode
 MKT Activation Energy: 83 kJ/mol

Alarm Conditions

Alarm Mode: OFF (Alarm disabled)

PDF Options

Inspection Range: Graphics & Alarm-handling "Last Transit - Arrived"
 PDF Customizing: Show complete Report (Alarm Conditions / Alarm Status / Logging Results)
 PDF Language: English
 Y-Axis Scaling of Chart: Automatic Zoom

Format Settings

Time Zone: GMT +00:00 Time Format: 24h
 Add 1 hour: Yes Temperature Unit: °C
 Date Format: DD.MMM.YYYY Decimal Separator: . (Period)

Handling Options

Button Mode: Full functionality: Transit - Arrived / Display-Statistics
 Display Mode: Always show current value
 Show Profile-ID on LCD: No
 Start Delay: Yes Transit Delay: No
 Delay Time: 30 m

Profile

Profile Checksum: 1.909.433.538 Profile-ID:

Device

Device Type: Ti1 Current State: Arrived
 Logger ID: 10041393 Remaining Battery: 402 d
 Configured by: S193, ELPRO-PC05/ELPRO 04.Apr.2011 15:17:16

Description

Report Title: Pfizer 2-8 Temperature Mapping
 Add. Info. Line 1: Pfizer/ Dawson Cold Store
 Add. Info. Line 2:
 Add. Info. Line 3: Mapping Location No: 8
 Add. Info. Line 4: (See ELPRO Mapping Location Documentation)
 Add. Info. Line 5:
 Add. Info. Line 6:
 Add. Info. Line 7:
 Add. Info. Line 8:
 Filename: Pfizer Mapping

Logging

Log Interval / Duration: 1 m / 11 d 2 h 40 m Start Mode: Start after pressing a key
 Log Mode: Start/Stop Transit Initial State: Start in Transit mode
 MKT Activation Energy: 83 kJ/mol

Alarm Conditions

Alarm Mode: OFF (Alarm disabled)

PDF Options

Inspection Range: Graphics & Alarm-handling "Last Transit - Arrived"
 PDF Customizing: Show complete Report (Alarm Conditions / Alarm Status / Logging Results)
 PDF Language: English
 Y-Axis Scaling of Chart: Automatic Zoom

Format Settings

Time Zone: GMT +00:00 Time Format: 24h
 Add 1 hour: Yes Temperature Unit: °C
 Date Format: DD.MMM.YYYY Decimal Separator: . (Period)

Handling Options

Button Mode: Full functionality: Transit - Arrived / Display-Statistics
 Display Mode: Always show current value
 Show Profile-ID on LCD: No
 Start Delay: Yes Transit Delay: No
 Delay Time: 30 m

Profile

Profile Checksum: 512.841.069 Profile-ID:

Device

Device Type: Ti1 Current State: Arrived
 Logger ID: 10041400 Remaining Battery: 407 d
 Configured by: S193, ELPRO-PC05/ELPRO 04.Apr.2011 15:17:57

Description

Report Title: Pfizer 2-8 Temperature Mapping
 Add. Info. Line 1: Pfizer/ Dawson Cold Store
 Add. Info. Line 2:
 Add. Info. Line 3: Mapping Location No: 9
 Add. Info. Line 4: (See ELPRO Mapping Location Documentation)
 Add. Info. Line 5:
 Add. Info. Line 6:
 Add. Info. Line 7:
 Add. Info. Line 8:
 Filename: Pfizer Mapping

Logging

Log Interval / Duration: 1 m / 11 d 2 h 40 m Start Mode: Start after pressing a key
 Log Mode: Start/Stop Transit Initial State: Start in Transit mode
 MKT Activation Energy: 83 kJ/mol

Alarm Conditions

Alarm Mode: OFF (Alarm disabled)

PDF Options

Inspection Range: Graphics & Alarm-handling "Last Transit - Arrived"
 PDF Customizing: Show complete Report (Alarm Conditions / Alarm Status / Logging Results)
 PDF Language: English
 Y-Axis Scaling of Chart: Automatic Zoom

Format Settings

Time Zone: GMT +00:00 Time Format: 24h
 Add 1 hour: Yes Temperature Unit: °C
 Date Format: DD.MMM.YYYY Decimal Separator: . (Period)

Handling Options

Button Mode: Full functionality: Transit - Arrived / Display-Statistics
 Display Mode: Always show current value
 Show Profile-ID on LCD: No
 Start Delay: Yes Transit Delay: No
 Delay Time: 30 m

Profile

Profile Checksum: 1.351.406.523 Profile-ID:

Device

Device Type: Ti1 Current State: Arrived
 Logger ID: 10041401 Remaining Battery: 405 d
 Configured by: S193, ELPRO-PC05/ELPRO 04.Apr.2011 15:18:37

Description

Report Title: Pfizer 2-8 Temperature Mapping
 Add. Info. Line 1: Pfizer/ Dawson Cold Store
 Add. Info. Line 2:
 Add. Info. Line 3: Mapping Location No: 10
 Add. Info. Line 4: (See ELPRO Mapping Location Documentation)
 Add. Info. Line 5:
 Add. Info. Line 6:
 Add. Info. Line 7:
 Add. Info. Line 8:
 Filename: Pfizer Mapping

Logging

Log Interval / Duration: 1 m / 11 d 2 h 40 m Start Mode: Start after pressing a key
 Log Mode: Start/Stop Transit Initial State: Start in Transit mode
 MKT Activation Energy: 83 kJ/mol

Alarm Conditions

Alarm Mode: OFF (Alarm disabled)

PDF Options

Inspection Range: Graphics & Alarm-handling "Last Transit - Arrived"
 PDF Customizing: Show complete Report (Alarm Conditions / Alarm Status / Logging Results)
 PDF Language: English
 Y-Axis Scaling of Chart: Automatic Zoom

Format Settings

Time Zone: GMT +00:00 Time Format: 24h
 Add 1 hour: Yes Temperature Unit: °C
 Date Format: DD.MMM.YYYY Decimal Separator: . (Period)

Handling Options

Button Mode: Full functionality: Transit - Arrived / Display-Statistics
 Display Mode: Always show current value
 Show Profile-ID on LCD: No
 Start Delay: Yes Transit Delay: No
 Delay Time: 30 m

Profile

Profile Checksum: 1.070.735.892 Profile-ID:

Device

Device Type: Ti1 Current State: Arrived
 Logger ID: 10041402 Remaining Battery: 405 d
 Configured by: S193, ELPRO-PC05/ELPRO 04.Apr.2011 15:19:19

Description

Report Title: Pfizer 2-8 Temperature Mapping
 Add. Info. Line 1: Pfizer/ Dawson Cold Store
 Add. Info. Line 2:
 Add. Info. Line 3: Mapping Location No: 11
 Add. Info. Line 4: (See ELPRO Mapping Location Documentation)
 Add. Info. Line 5:
 Add. Info. Line 6:
 Add. Info. Line 7:
 Add. Info. Line 8:
 Filename: Pfizer Mapping

Logging

Log Interval / Duration: 1 m / 11 d 2 h 40 m Start Mode: Start after pressing a key
 Log Mode: Start/Stop Transit Initial State: Start in Transit mode
 MKT Activation Energy: 83 kJ/mol

Alarm Conditions

Alarm Mode: OFF (Alarm disabled)

PDF Options

Inspection Range: Graphics & Alarm-handling "Last Transit - Arrived"
 PDF Customizing: Show complete Report (Alarm Conditions / Alarm Status / Logging Results)
 PDF Language: English
 Y-Axis Scaling of Chart: Automatic Zoom

Format Settings

Time Zone: GMT +00:00 Time Format: 24h
 Add 1 hour: Yes Temperature Unit: °C
 Date Format: DD.MMM.YYYY Decimal Separator: . (Period)

Handling Options

Button Mode: Full functionality: Transit - Arrived / Display-Statistics
 Display Mode: Always show current value
 Show Profile-ID on LCD: No
 Start Delay: Yes Transit Delay: No
 Delay Time: 30 m

Profile

Profile Checksum: 2.385.588.453 Profile-ID:

Device

Device Type: Ti1 Current State: Arrived
 Logger ID: 10041403 Remaining Battery: 406 d
 Configured by: S193, ELPRO-PC05/ELPRO 04.Apr.2011 15:19:56

Description

Report Title: Pfizer 2-8 Temperature Mapping
 Add. Info. Line 1: Pfizer/ Dawson Cold Store
 Add. Info. Line 2:
 Add. Info. Line 3: Mapping Location No: 12
 Add. Info. Line 4: (See ELPRO Mapping Location Documentation)
 Add. Info. Line 5:
 Add. Info. Line 6:
 Add. Info. Line 7:
 Add. Info. Line 8:
 Filename: Pfizer Mapping

Logging

Log Interval / Duration: 1 m / 11 d 2 h 40 m Start Mode: Start after pressing a key
 Log Mode: Start/Stop Transit Initial State: Start in Transit mode
 MKT Activation Energy: 83 kJ/mol

Alarm Conditions

Alarm Mode: OFF (Alarm disabled)

PDF Options

Inspection Range: Graphics & Alarm-handling "Last Transit - Arrived"
 PDF Customizing: Show complete Report (Alarm Conditions / Alarm Status / Logging Results)
 PDF Language: English
 Y-Axis Scaling of Chart: Automatic Zoom

Format Settings

Time Zone: GMT +00:00 Time Format: 24h
 Add 1 hour: Yes Temperature Unit: °C
 Date Format: DD.MMM.YYYY Decimal Separator: . (Period)

Handling Options

Button Mode: Full functionality: Transit - Arrived / Display-Statistics
 Display Mode: Always show current value
 Show Profile-ID on LCD: No
 Start Delay: Yes Transit Delay: No
 Delay Time: 30 m

Profile

Profile Checksum: 3.782.197.578 Profile-ID:

Device

Device Type: Ti1 Current State: Arrived
 Logger ID: 10041404 Remaining Battery: 406 d
 Configured by: S193, ELPRO-PC05/ELPRO 04.Apr.2011 15:20:40

Description

Report Title: Pfizer 2-8 Temperature Mapping
 Add. Info. Line 1: Pfizer/ Dawson Cold Store
 Add. Info. Line 2:
 Add. Info. Line 3: Mapping Location No: 13
 Add. Info. Line 4: (See ELPRO Mapping Location Documentation)
 Add. Info. Line 5:
 Add. Info. Line 6:
 Add. Info. Line 7:
 Add. Info. Line 8:
 Filename: Pfizer Mapping

Logging

Log Interval / Duration: 1 m / 11 d 2 h 40 m Start Mode: Start after pressing a key
 Log Mode: Start/Stop Transit Initial State: Start in Transit mode
 MKT Activation Energy: 83 kJ/mol

Alarm Conditions

Alarm Mode: OFF (Alarm disabled)

PDF Options

Inspection Range: Graphics & Alarm-handling "Last Transit - Arrived"
 PDF Customizing: Show complete Report (Alarm Conditions / Alarm Status / Logging Results)
 PDF Language: English
 Y-Axis Scaling of Chart: Automatic Zoom

Format Settings

Time Zone: GMT +00:00 Time Format: 24h
 Add 1 hour: Yes Temperature Unit: °C
 Date Format: DD.MMM.YYYY Decimal Separator: . (Period)

Handling Options

Button Mode: Full functionality: Transit - Arrived / Display-Statistics
 Display Mode: Always show current value
 Show Profile-ID on LCD: No
 Start Delay: Yes Transit Delay: No
 Delay Time: 30 m

Profile

Profile Checksum: 914.756.422 Profile-ID:

Device

Device Type: Ti1 Current State: Arrived
 Logger ID: 10041405 Remaining Battery: 406 d
 Configured by: S193, ELPRO-PC05/ELPRO 04.Apr.2011 15:21:20

Description

Report Title: Pfizer 2-8 Temperature Mapping
 Add. Info. Line 1: Pfizer/ Dawson Cold Store
 Add. Info. Line 2:
 Add. Info. Line 3: Mapping Location No: 14
 Add. Info. Line 4: (See ELPRO Mapping Location Documentation)
 Add. Info. Line 5:
 Add. Info. Line 6:
 Add. Info. Line 7:
 Add. Info. Line 8:
 Filename: Pfizer Mapping

Logging

Log Interval / Duration: 1 m / 11 d 2 h 40 m Start Mode: Start after pressing a key
 Log Mode: Start/Stop Transit Initial State: Start in Transit mode
 MKT Activation Energy: 83 kJ/mol

Alarm Conditions

Alarm Mode: OFF (Alarm disabled)

PDF Options

Inspection Range: Graphics & Alarm-handling "Last Transit - Arrived"
 PDF Customizing: Show complete Report (Alarm Conditions / Alarm Status / Logging Results)
 PDF Language: English
 Y-Axis Scaling of Chart: Automatic Zoom

Format Settings

Time Zone: GMT +00:00 Time Format: 24h
 Add 1 hour: Yes Temperature Unit: °C
 Date Format: DD.MMM.YYYY Decimal Separator: . (Period)

Handling Options

Button Mode: Full functionality: Transit - Arrived / Display-Statistics
 Display Mode: Always show current value
 Show Profile-ID on LCD: No
 Start Delay: Yes Transit Delay: No
 Delay Time: 30 m

Profile

Profile Checksum: 1.507.386.089 Profile-ID:

Device

Device Type: Ti1 Current State: Arrived
 Logger ID: 10041406 Remaining Battery: 407 d
 Configured by: S193, ELPRO-PC05/ELPRO 04.Apr.2011 15:22:03

Description

Report Title: Pfizer 2-8 Temperature Mapping
 Add. Info. Line 1: Pfizer/ Dawson Cold Store
 Add. Info. Line 2:
 Add. Info. Line 3: Mapping Location No: 15
 Add. Info. Line 4: (See ELPRO Mapping Location Documentation)
 Add. Info. Line 5:
 Add. Info. Line 6:
 Add. Info. Line 7:
 Add. Info. Line 8:
 Filename: Pfizer Mapping

Logging

Log Interval / Duration: 1 m / 11 d 2 h 40 m Start Mode: Start after pressing a key
 Log Mode: Start/Stop Transit Initial State: Start in Transit mode
 MKT Activation Energy: 83 kJ/mol

Alarm Conditions

Alarm Mode: OFF (Alarm disabled)

PDF Options

Inspection Range: Graphics & Alarm-handling "Last Transit - Arrived"
 PDF Customizing: Show complete Report (Alarm Conditions / Alarm Status / Logging Results)
 PDF Language: English
 Y-Axis Scaling of Chart: Automatic Zoom

Format Settings

Time Zone: GMT +00:00 Time Format: 24h
 Add 1 hour: Yes Temperature Unit: °C
 Date Format: DD.MMM.YYYY Decimal Separator: . (Period)

Handling Options

Button Mode: Full functionality: Transit - Arrived / Display-Statistics
 Display Mode: Always show current value
 Show Profile-ID on LCD: No
 Start Delay: Yes Transit Delay: No
 Delay Time: 30 m

Profile

Profile Checksum: 3.896.242.200 Profile-ID:

Device

Device Type: Ti1 Current State: Arrived
 Logger ID: 10041407 Remaining Battery: 406 d
 Configured by: S193, ELPRO-PC05/ELPRO 04.Apr.2011 15:22:43

Description

Report Title: Pfizer 2-8 Temperature Mapping
 Add. Info. Line 1: Pfizer/ Dawson Cold Store
 Add. Info. Line 2:
 Add. Info. Line 3: Mapping Location No: 16
 Add. Info. Line 4: (See ELPRO Mapping Location Documentation)
 Add. Info. Line 5:
 Add. Info. Line 6:
 Add. Info. Line 7:
 Add. Info. Line 8:
 Filename: Pfizer Mapping

Logging

Log Interval / Duration: 1 m / 11 d 2 h 40 m Start Mode: Start after pressing a key
 Log Mode: Start/Stop Transit Initial State: Start in Transit mode
 MKT Activation Energy: 83 kJ/mol

Alarm Conditions

Alarm Mode: OFF (Alarm disabled)

PDF Options

Inspection Range: Graphics & Alarm-handling "Last Transit - Arrived"
 PDF Customizing: Show complete Report (Alarm Conditions / Alarm Status / Logging Results)
 PDF Language: English
 Y-Axis Scaling of Chart: Automatic Zoom

Format Settings

Time Zone: GMT +00:00 Time Format: 24h
 Add 1 hour: Yes Temperature Unit: °C
 Date Format: DD.MMM.YYYY Decimal Separator: . (Period)

Handling Options

Button Mode: Full functionality: Transit - Arrived / Display-Statistics
 Display Mode: Always show current value
 Show Profile-ID on LCD: No
 Start Delay: Yes Transit Delay: No
 Delay Time: 30 m

Profile

Profile Checksum: 2.271.543.735 Profile-ID:

Device

Device Type: Ti1 Current State: Arrived
 Logger ID: 10041409 Remaining Battery: 406 d
 Configured by: S193, ELPRO-PC05/ELPRO 04.Apr.2011 15:23:28

Description

Report Title: Pfizer 2-8 Temperature Mapping
 Add. Info. Line 1: Pfizer/ Dawson Cold Store
 Add. Info. Line 2:
 Add. Info. Line 3: Mapping Location No: 17
 Add. Info. Line 4: (See ELPRO Mapping Location Documentation)
 Add. Info. Line 5:
 Add. Info. Line 6:
 Add. Info. Line 7:
 Add. Info. Line 8:
 Filename: Pfizer Mapping

Logging

Log Interval / Duration: 1 m / 11 d 2 h 40 m Start Mode: Start after pressing a key
 Log Mode: Start/Stop Transit Initial State: Start in Transit mode
 MKT Activation Energy: 83 kJ/mol

Alarm Conditions

Alarm Mode: OFF (Alarm disabled)

PDF Options

Inspection Range: Graphics & Alarm-handling "Last Transit - Arrived"
 PDF Customizing: Show complete Report (Alarm Conditions / Alarm Status / Logging Results)
 PDF Language: English
 Y-Axis Scaling of Chart: Automatic Zoom

Format Settings

Time Zone: GMT +00:00 Time Format: 24h
 Add 1 hour: Yes Temperature Unit: °C
 Date Format: DD.MMM.YYYY Decimal Separator: . (Period)

Handling Options

Button Mode: Full functionality: Transit - Arrived / Display-Statistics
 Display Mode: Always show current value
 Show Profile-ID on LCD: No
 Start Delay: Yes Transit Delay: No
 Delay Time: 30 m

Profile

Profile Checksum: 2.627.293.761 Profile-ID:

Device

Device Type: Ti1 Current State: Arrived
 Logger ID: 10041410 Remaining Battery: 405 d
 Configured by: S193, ELPRO-PC05/ELPRO 04.Apr.2011 15:24:08

Description

Report Title: Pfizer 2-8 Temperature Mapping
 Add. Info. Line 1: Pfizer/ Dawson Cold Store
 Add. Info. Line 2:
 Add. Info. Line 3: Mapping Location No: 18
 Add. Info. Line 4: (See ELPRO Mapping Location Documentation)
 Add. Info. Line 5:
 Add. Info. Line 6:
 Add. Info. Line 7:
 Add. Info. Line 8:
 Filename: Pfizer Mapping

Logging

Log Interval / Duration: 1 m / 11 d 2 h 40 m Start Mode: Start after pressing a key
 Log Mode: Start/Stop Transit Initial State: Start in Transit mode
 MKT Activation Energy: 83 kJ/mol

Alarm Conditions

Alarm Mode: OFF (Alarm disabled)

PDF Options

Inspection Range: Graphics & Alarm-handling "Last Transit - Arrived"
 PDF Customizing: Show complete Report (Alarm Conditions / Alarm Status / Logging Results)
 PDF Language: English
 Y-Axis Scaling of Chart: Automatic Zoom

Format Settings

Time Zone: GMT +00:00 Time Format: 24h
 Add 1 hour: Yes Temperature Unit: °C
 Date Format: DD.MMM.YYYY Decimal Separator: . (Period)

Handling Options

Button Mode: Full functionality: Transit - Arrived / Display-Statistics
 Display Mode: Always show current value
 Show Profile-ID on LCD: No
 Start Delay: Yes Transit Delay: No
 Delay Time: 30 m

Profile

Profile Checksum: 4.089.947.118 Profile-ID:

Device

Device Type: Ti1 Current State: Arrived
 Logger ID: 10041411 Remaining Battery: 402 d
 Configured by: S193, ELPRO-PC05/ELPRO 04.Apr.2011 15:25:07

Description

Report Title: Pfizer 2-8 Temperature Mapping
 Add. Info. Line 1: Pfizer/ Dawson Cold Store
 Add. Info. Line 2:
 Add. Info. Line 3: Mapping Location No: 19
 Add. Info. Line 4: (See ELPRO Mapping Location Documentation)
 Add. Info. Line 5:
 Add. Info. Line 6:
 Add. Info. Line 7:
 Add. Info. Line 8:
 Filename: Pfizer Mapping

Logging

Log Interval / Duration: 1 m / 11 d 2 h 40 m Start Mode: Start after pressing a key
 Log Mode: Start/Stop Transit Initial State: Start in Transit mode
 MKT Activation Energy: 83 kJ/mol

Alarm Conditions

Alarm Mode: OFF (Alarm disabled)

PDF Options

Inspection Range: Graphics & Alarm-handling "Last Transit - Arrived"
 PDF Customizing: Show complete Report (Alarm Conditions / Alarm Status / Logging Results)
 PDF Language: English
 Y-Axis Scaling of Chart: Automatic Zoom

Format Settings

Time Zone: GMT +00:00 Time Format: 24h
 Add 1 hour: Yes Temperature Unit: °C
 Date Format: DD.MMM.YYYY Decimal Separator: . (Period)

Handling Options

Button Mode: Full functionality: Transit - Arrived / Display-Statistics
 Display Mode: Always show current value
 Show Profile-ID on LCD: No
 Start Delay: Yes Transit Delay: No
 Delay Time: 30 m

Profile

Profile Checksum: 2.592.600.611 Profile-ID:

Device

Device Type: Ti1 Current State: Arrived
 Logger ID: 10041412 Remaining Battery: 402 d
 Configured by: S193, ELPRO-PC05/ELPRO 04.Apr.2011 15:25:44

Description

Report Title: Pfizer 2-8 Temperature Mapping
 Add. Info. Line 1: Pfizer/ Dawson Cold Store
 Add. Info. Line 2:
 Add. Info. Line 3: Mapping Location No: 20
 Add. Info. Line 4: (See ELPRO Mapping Location Documentation)
 Add. Info. Line 5:
 Add. Info. Line 6:
 Add. Info. Line 7:
 Add. Info. Line 8:
 Filename: Pfizer Mapping

Logging

Log Interval / Duration: 1 m / 11 d 2 h 40 m Start Mode: Start after pressing a key
 Log Mode: Start/Stop Transit Initial State: Start in Transit mode
 MKT Activation Energy: 83 kJ/mol

Alarm Conditions

Alarm Mode: OFF (Alarm disabled)

PDF Options

Inspection Range: Graphics & Alarm-handling "Last Transit - Arrived"
 PDF Customizing: Show complete Report (Alarm Conditions / Alarm Status / Logging Results)
 PDF Language: English
 Y-Axis Scaling of Chart: Automatic Zoom

Format Settings

Time Zone: GMT +00:00 Time Format: 24h
 Add 1 hour: Yes Temperature Unit: °C
 Date Format: DD.MMM.YYYY Decimal Separator: . (Period)

Handling Options

Button Mode: Full functionality: Transit - Arrived / Display-Statistics
 Display Mode: Always show current value
 Show Profile-ID on LCD: No
 Start Delay: Yes Transit Delay: No
 Delay Time: 30 m

Profile

Profile Checksum: 4.124.640.140 Profile-ID:

Device

Device Type: Ti1 Current State: Arrived
 Logger ID: 10041413 Remaining Battery: 402 d
 Configured by: S193, ELPRO-PC05/ELPRO 04.Apr.2011 15:26:26

Description

Report Title: Pfizer 2-8 Temperature Mapping
 Add. Info. Line 1: Pfizer/ Dawson Cold Store
 Add. Info. Line 2:
 Add. Info. Line 3: Mapping Location No: 21
 Add. Info. Line 4: (See ELPRO Mapping Location Documentation)
 Add. Info. Line 5:
 Add. Info. Line 6:
 Add. Info. Line 7:
 Add. Info. Line 8:
 Filename: Pfizer Mapping

Logging

Log Interval / Duration: 1 m / 11 d 2 h 40 m Start Mode: Start after pressing a key
 Log Mode: Start/Stop Transit Initial State: Start in Transit mode
 MKT Activation Energy: 83 kJ/mol

Alarm Conditions

Alarm Mode: OFF (Alarm disabled)

PDF Options

Inspection Range: Graphics & Alarm-handling "Last Transit - Arrived"
 PDF Customizing: Show complete Report (Alarm Conditions / Alarm Status / Logging Results)
 PDF Language: English
 Y-Axis Scaling of Chart: Automatic Zoom

Format Settings

Time Zone: GMT +00:00 Time Format: 24h
 Add 1 hour: Yes Temperature Unit: °C
 Date Format: DD.MMM.YYYY Decimal Separator: . (Period)

Handling Options

Button Mode: Full functionality: Transit - Arrived / Display-Statistics
 Display Mode: Always show current value
 Show Profile-ID on LCD: No
 Start Delay: Yes Transit Delay: No
 Delay Time: 30 m

Profile

Profile Checksum: 1.144.656.253 Profile-ID:

Device

Device Type: Ti1 Current State: Arrived
Logger ID: 10041414 Remaining Battery: 402 d
Configured by: S193, ELPRO-PC05/ELPRO 04.Apr.2011 15:27:04

Description

Report Title: Pfizer 2-8 Temperature Mapping
Add. Info. Line 1: Pfizer/ Dawson Cold Store
Add. Info. Line 2:
Add. Info. Line 3: Mapping Location No: 22
Add. Info. Line 4: (See ELPRO Mapping Location Documentation)
Add. Info. Line 5:
Add. Info. Line 6:
Add. Info. Line 7:
Add. Info. Line 8:
Filename: Pfizer Mapping

Logging

Log Interval / Duration: 1 m / 11 d 2 h 40 m Start Mode: Start after pressing a key
Log Mode: Start/Stop Transit Initial State: Start in Transit mode
MKT Activation Energy: 83 kJ/mol

Alarm Conditions

Alarm Mode: OFF (Alarm disabled)

PDF Options

Inspection Range: Graphics & Alarm-handling "Last Transit - Arrived"
PDF Customizing: Show complete Report (Alarm Conditions / Alarm Status / Logging Results)
PDF Language: English
Y-Axis Scaling of Chart: Automatic Zoom

Format Settings

Time Zone: GMT +00:00 Time Format: 24h
Add 1 hour: Yes Temperature Unit: °C
Date Format: DD.MMM.YYYY Decimal Separator: . (Period)

Handling Options

Button Mode: Full functionality: Transit - Arrived / Display-Statistics
Display Mode: Always show current value
Show Profile-ID on LCD: No
Start Delay: Yes Transit Delay: No
Delay Time: 30 m